

**THE INDEPENDENT COLLEGES AND UNIVERSITIES OF FLORIDA**

**2001**  
**ACCOUNTABILITY REPORT:**  
**Quality, Productivity, Diversity, and Access**

Prepared for ICUF  
by Blair T. Atherton, Ph.D.  
Executive Director of Institutional Research  
Nova Southeastern University

**August 2002**

## TABLE OF CONTENTS

Acknowledgments .....	vii
Introduction .....	1
Notes on Methodology .....	3
Overview .....	4
<b>ICUF Institutional Profiles</b> .....	7
Institutional Summary .....	8
Fall 2001 Enrollments of ICUF Institutions by Degree Level .....	9
Fall 2001 Proportion of Students with Permanent Residence in Florida .....	10
Fall 2001 Racial/Ethnic Distribution of Florida Resident Students at ICUF Institutions by Degree Level .....	11
Fall 2001 Racial/Ethnic Distribution of Florida Resident Students Attending ICUF Institutions .....	12
Fall 2001 Racial/Ethnic Distribution of Students Attending ICUF Institutions .....	13
Fall 2001 Racial/Ethnic Distribution of Florida Resident Undergraduate Students Attending ICUF Institutions .....	14
Fall 2001 Racial/Ethnic Distribution of All Undergraduate Students Attending ICUF Institutions .....	15
Racial/Ethnic Distribution of Florida Resident Undergraduates Enrolled in Fall 2001 .....	16
Racial/Ethnic Distribution of Florida Resident Full-time Undergraduates Enrolled in Fall 2001 .....	17
Racial/Ethnic Distribution of Florida Resident Part-time Undergraduates Enrolled in Fall 2001 .....	18

Fall 2001 Racial/Ethnic Distribution of Florida Resident Students Pursuing Graduate Degrees at ICUF Institutions . . . . .	19
Fall 2001 Racial/Ethnic Distribution of All Graduate Students Attending ICUF Institutions . . . . .	21
Fall 2001 Racial/Ethnic Distribution of Florida Resident Students Pursuing First-Professional Degrees at ICUF Institutions . . . . .	22
Fall 2001 Racial/Ethnic Distribution of All First-Professional Students Attending ICUF Institutions . . . . .	23
Fall 2001 Racial/Ethnic Distribution of Florida Resident First-Professional Students Attending ICUF Institutions . . . . .	23
<b>The Full-Time Faculty</b> . . . . .	24
Fall 2001 Racial/Ethnic Distribution of Full-Time Faculty . . . . .	25
Fall 2001 Full-Time Faculty Undergraduate Teaching Loads . . . . .	27
Percentage of Undergraduate Course Sections Taught by Faculty in Fall 2001 . . . . .	28
<b>Undergraduate Class Size</b> . . . . .	29
Fall 2001 Size Distribution of Undergraduate Course Sections . . . . .	30
Fall 2001 Mean Undergraduate Course Section Size . . . . .	32
<b>Completion of the Bachelor's Degree</b> . . . . .	33
Comparison of Actual Credit Hours Accrued at Graduation Versus the Number Required for a Bachelor's Degree . . . . .	34
Racial/Ethnic Distribution of Florida Resident Bachelor's Degree Recipients Graduating During the Period July 1, 2000 through June 30, 2001 . . . . .	35
Racial/Ethnic Distribution of All Bachelor's Degree Recipients Graduating During the Period July 1, 2000 through June 30, 2001 . . . . .	37

Racial/Ethnic Distribution of Florida Resident Undergraduates Pursuing a Degree in Education .....	38
Racial/Ethnic Distribution of Florida Residents Awarded a Bachelor's Degree in Education .....	39
Graduation and Persistence Rates for First-time in College Full-time Freshmen .....	40
Racial/Ethnic Distribution of First-Time in College Full-Time Freshmen Entering in Fall 1995 .....	42
Six-Year Graduation and Persistence Rates for First-Time in College Full-Time Freshmen Entering in Fall 1995 .....	44
Associate of Arts Transfer Students from Florida Community Colleges Three-Year Graduation Rates from ICUF Institutions .....	45
<b>Graduate and First-Professional Degrees Awarded .....</b>	<b>46</b>
Percentage of Degrees Awarded to Florida Resident Students from Racial/Ethnic Minorities by Degree Level .....	47
Racial/Ethnic Distribution of Total Degree Degrees Awarded by ICUF Institutions During the Period July 1, 2000 through June 30, 2001 .....	48
Racial/Ethnic Distribution of Total Degree Degrees Awarded by ICUF Institutions to Florida Residents During the Period July 1, 2000 through June 30, 2001 .....	49
Racial/Ethnic Distribution of All Master's Degrees Awarded by ICUF Institutions During the Period July 1, 2000 through June 30, 2001 ..	50
Racial/Ethnic Distribution of Master's Degrees Awarded by ICUF Institutions to Florida Residents During the Period July 1, 2000 through June 30, 2001 .....	51
Racial/Ethnic Distribution of All Doctoral Degrees Awarded by ICUF Institutions During the Period July 1, 2000 through June 30, 2001 ..	52

Racial/Ethnic Distribution of Doctoral Degrees Awarded by ICUF Institutions to Florida Residents During the Period July 1, 2000 through June 30, 2001 .....	52
Racial/Ethnic Distribution of All First-Professional Degrees Awarded by ICUF Institutions During the Period July 1, 2000 through June 30, 2001 ..	53
Racial/Ethnic Distribution of First-Professional Degrees Awarded by ICUF Institutions to Florida Residents During the Period July 1, 2000 through June 30, 2001 .....	53
<b>Appendix A:</b> 2001 ICUF Accountability Report Institutional Data Collectors .	A-1
<b>Appendix B:</b> Accreditation of Academic Programs at ICUF Institutions .....	B-1

List of Figures

Figure 1. Proportion of Total Degrees Awarded by ICUF and SUS Combined ...	6
Figure 2. Fall 2001 Racial/Ethnic Distribution of All Florida Resident Students Attending ICUF Institutions .....	12
Figure 3. Fall 2001 Racial/Ethnic Distribution of Florida Resident Undergraduate Students Attending ICUF Institutions .....	14
Figure 4. Fall 2001 Racial/Ethnic Distribution of Florida Resident Graduate Students Attending ICUF Institutions .....	19
Figure 5. Fall 2001 Racial/Ethnic Distribution of Florida Resident First-Professional Students Attending ICUF Institutions .....	22
Figure 6. Fall 2001 Racial/Ethnic Distribution of Full-time Faculty .....	25
Figure 7. Fall 2001 Size Distribution of Undergraduate Course Sections .....	30

Figure 8. **Racial/Ethnic Distribution of Florida Resident  
Bachelor's Degree Recipients** ..... 35

Figure 9. **Racial/Ethnic Distribution of First-time in College Freshmen  
Entering in Fall 1995** ..... 42

## ACKNOWLEDGMENTS

The original set of 12 Indicators that data in this report address were developed by the Postsecondary Education Planning Commission (PEPC) in consultation with the ICUF Presidents. Subsequently, data collection representatives from ICUF member institutions (principally institutional research directors) made refinements in the data collection process in 1995. Since then, a variety of additional data have been added to provide a more comprehensive description of the ICUF group of institutions. The substantial time and effort that institutional data collectors put into preparing the Accountability Report for their institution is gratefully acknowledged.

## INTRODUCTION

The Independent Colleges and Universities of Florida (ICUF) Accountability Report was created in consultation with the Postsecondary Education Planning Commission (PEPC) in response to Florida Statute 240.147. The Statute required all independent postsecondary institutions eligible for the Florida Resident Access Grant (FRAG) to develop accountability processes. This is the eighth cycle of reporting by ICUF institutions. The statute requiring this report was eliminated when the Florida Department of Education was reorganized in the 2001-2002 fiscal year.

The Florida legislature recently developed a series of performance measures largely focused on outcomes of students receiving the FRAG or other types of state funding. While this “accountability” report addresses only a few of the new performance measures, the data it contains have proven to be valuable to legislators, and provide essential context for any accountability process. It also provides an important resource for other ICUF constituencies. Therefore, this information will continue to be collected and published by ICUF in the future, even though it is no longer required by the State of Florida.

This Accountability Report contains a summary of data provided by institutions that are members of ICUF. Other regionally accredited independent institutions that are not members of ICUF, and nonregionally accredited proprietary institutions are not included.

Institutions are grouped by the types of degrees they offer (i.e., bachelor’s, master’s, and doctorate). Although this provides a convenient way to group institutions, it should not be assumed that institutions in each group have the same missions, or are directly comparable in their characteristics. It must be emphasized that the ICUF institutions are diverse: they differ from each other in details of their mission, characteristics of the student body, degree offerings, etc. Therefore, it should not be assumed that data for one ICUF institution is comparable to that of another, or to one of the Florida public universities.

The report is intended to address broad issues of quality, productivity, diversity, and access. Initially, the majority of data contained in the Accountability Report focused on *undergraduate* students, faculty, and programs. Over the years a variety of additional data have been added to the report to provide a broader context in which to become familiar with the contributions of ICUF institutions. For example, this year data on race/ethnicity, and gender of Florida resident enrolled students and degree recipients have been added to demonstrate the access to higher education provided by ICUF institutions to Florida students from racial/ethnic minorities.

While undergraduates are of particular interest to federal and state legislators, it should not be forgotten that many ICUF institutions also offer a variety of master’s, doctoral, and first-professional degree programs. The latter contribute significantly to the overall quality of institutions. Accordingly, substantial data concerning graduate and first-professional students were added to the report to demonstrate the significant contribution made by ICUF institutions in educating professionals with advanced degrees.

Furthermore, addition of data on the number of Florida residents served by member institutions make it possible for state agencies and other constituencies to gauge the contribution made by ICUF institutions in educating Florida residents. Student demographics demonstrate service to racial/ethnic minorities, and data such as the number of degrees awarded provide measures of institutional and independent sector productivity. Regional, professional, and special accreditations listed in Appendix B resulted from thorough external reviews, and provide strong evidence of the overall quality of ICUF institutions.

Where similar data were available, comparisons were made between aggregate data for the ICUF *sector* versus aggregate data for the State University System of Florida (SUS) *sector*. Comparing aggregate data at the *sector-level* should normalize to some extent for some of the differences among institutions cited above. For example, at the sector level, the racial/ethnic demographics of faculty are similar for ICUF and the SUS. The intent is to provide some type of context in which to interpret the data and evaluate the contribution the ICUF group of institutions makes to higher education in Florida.

## Notes on Methodology

In keeping with the spirit of the original statute, and to reduce the reporting burden on institutions, data from required federal reports were used whenever possible. For example, portions of the report present data taken directly from various reports required by the U.S. Department of Education for maintenance of the national Integrated Postsecondary Education Data System (IPEDS).

Much of the data describing undergraduate students focuses on cohorts of full-time students that entered college for the first time at an ICUF institution in the Fall 1995. Cohorts were constructed using the methodology and criteria prescribed by the Student Right-to-Know Act.

Racial/ethnic data for faculty were collected using methods and criteria prescribed in the IPEDS Fall Staff Survey that institutions submit to the U.S. Department of Education. Similarly, data concerning institutional enrollments were obtained from data appearing in 2001 IPEDS Fall Enrollment Surveys. The number of degrees awarded came from the 2000-2001 IPEDS Completions Survey. Data on rates of graduation came from the IPEDS Graduation Rate Survey. None of the other data in the report could be obtained from any existing federal or other reports routinely prepared by institutions.

Unless noted otherwise, comparative data for SUS institutions came from *the 2000-2001 Fact Book* of the State University System of Florida produced by the Board of Regents in Tallahassee, Florida.

Note that occasionally the data expressed as percentages may not add to exactly 100 percent. The variance of  $\pm 1$  percent in these cases is due to rounding to whole numbers.

## OVERVIEW

The Independent Colleges and Universities of Florida (ICUF) are a diverse group of 27 institutions with different missions, serving diverse student populations, and offering a wide variety of undergraduate, graduate, and first-professional programs. They are dispersed throughout the state located in or near large cities, such as Miami, Fort Lauderdale, Jacksonville, and Tampa, as well as in more rural areas of Florida. Several institutions date back to the 1800s, while some others are relatively young, opening their doors to students as recently as 1992.

Total enrollments at ICUF institutions range from approximately 500 to 19,000 students. The ICUF group includes institutions that offer majors in liberal arts and sciences, fine arts, as well as engineering and technical fields. The group includes both religious- and nonreligious-affiliated institutions.

This report attempts to identify key data elements that may provide indicators of attributes such as racial/ethnic diversity, broad access to educational opportunities and to specific majors or fields of study, educational quality, and institutional productivity. Some of these attributes are more amenable to quantitative measurement than others. In particular, quality of education cannot be measured or characterized solely by quantitative criteria. A fundamental definition of academic quality has been a subject of much debate in academia spanning many decades. Nevertheless, regional and specialized accreditations provide an important quality assurance process to protect the public.

The *2000-2001 Fact Book* of the State University System of Florida provided an excellent source of data for limited comparisons of SUS statistics with those of the ICUF institutions. ICUF institutions were comparable to the SUS in areas such as the diversity of faculty, six-year graduation rates of first-time in college, full-time freshmen, and three-year graduation rates of full-time associate of arts students that transferred to ICUF institutions. Comparative data were not readily available for other types of data contained in this report.

Several outstanding strengths of ICUF institutions emerged from examination of data contained in this report:

### Access to Higher Education

One of the ways that ICUF institutions complement the institutions of the SUS is by providing access to a wide array of fields of study. ICUF institutions offer some programs not available in the SUS, and others that provide student access to particular majors or fields of study that are space-limited in the SUS. For example, with few exceptions, ICUF institutions admitted 100% of students transferring from Florida Community Colleges with an associate of arts degree into the undergraduate program of their choice.

ICUF institutions also provide greater access to students from racial/ethnic minorities at all degree levels. When data for Florida residents attending ICUF institutions are compared with the SUS where 90 percent of enrolled students are Florida residents, ICUF institutions admit and graduate significantly higher proportions of students from minorities. The proportion of Florida resident students from minorities enrolled in ICUF institutions at all degree levels in fall 2001 was 27 percent higher than at SUS institutions (i.e., 42 percent minorities versus 33 percent in the SUS).

### Small Class Sizes

Eighty-five percent of all fall 2001 undergraduate classes at ICUF institutions had fewer than 30 students and 96 percent of all classes contained fewer than 40 students. Compared to the SUS, ICUF institutions had smaller mean undergraduate class sizes. Sector-wide, the mean class size was 19 and individual ICUF institution means ranged from 14 to 28 students. Moreover, the single largest class at any ICUF institution in fall 2001 was 245 students (range 33-245), substantially smaller than the largest classes at many SUS institutions.

### Efficient Progression to Degree Completion

An area that has been problematic at Florida Community Colleges and the SUS was that many students were graduating with large numbers of credits over and above the minimum number needed to graduate. This increased students' length of stay, and the cost to state taxpayers. Both state systems have taken action to reduce this problem. SUS institutions have attempted to limit excess credits to less than 115 percent of the total credits required for graduation. For 120 credit programs, this translates to a maximum of 138 credits, or 18 credits more than needed for graduation.

As shown by data contained in this report, students graduated from ICUF institutions without a lot of extra credits in excess of the minimum required for graduation. On average, students graduated with only eight credits in excess of the minimum required to graduate. Mean total credits accrued at graduation by students at ICUF institutions were consistently well below the 115 percent ceiling set for the SUS. Moreover, a retrospective analysis of full-time freshmen that entered college for the first time at ICUF institutions in fall 1995 revealed that they graduated in a mean of 4.2 years. The mean time to degree at individual ICUF institutions ranged from 3.3 to six years.

### Productivity in Degrees Awarded

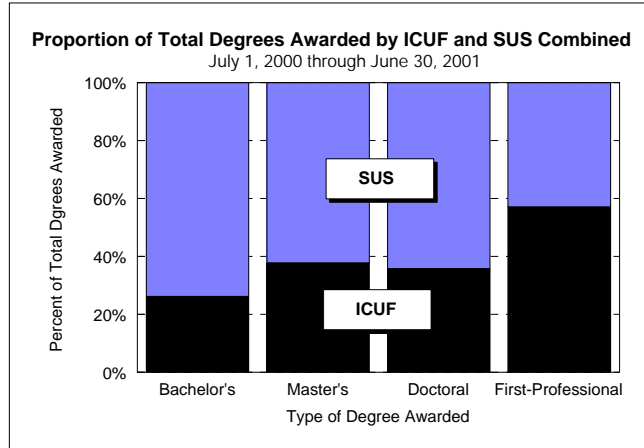
The ratio of total undergraduate enrollment to total bachelor's degrees awarded in 2000-2001 was approximately 5.5:1 for both ICUF and the SUS, suggesting similar levels of productivity in the two sectors.

The ICUF institutions awarded approximately 23,000 degrees at all levels compared to approximately 49,000 degrees awarded by the SUS. The ICUF institutions awarded approximately 1,100 associate's degrees, almost 13,000 bachelor's degrees, and approximately 8,900 graduate and first-professional degrees during the period July 1, 2000 through June 30, 2001. This represents 26 percent of the total number of bachelor's degrees, 38 percent of the master's degrees, 36 percent of the doctoral degrees, and 57 percent of the first-professional degrees awarded by the SUS and ICUF *combined* (see Figure 1 below).

Furthermore, bachelor's degrees in education awarded by ICUF institutions represented 37 percent of all such degrees awarded by ICUF and the SUS combined. In addition, the proportion of doctoral degrees awarded to women at ICUF institutions was almost twice the proportion at the SUS.

The ICUF institutions graduated a significantly higher proportion than the SUS of Florida resident students from racial/ethnic minorities at all award levels. For example, 37 percent of all degrees awarded by ICUF institutions were to Florida residents from minorities versus 29 percent in the SUS.

Figure 1



Also noteworthy is the fact that ICUF institutions awarded 33% more first-professional degrees than the entire SUS, and 57 percent of the first-professional degrees awarded annually by ICUF and the SUS combined. In addition, ICUF institutions offer first-professional degrees in a broader range of fields than the SUS. The latter offers professional degrees in medicine, pharmacy, dentistry, veterinary medicine, and law, while ICUF offers degrees in medicine, pharmacy, dentistry, optometry, podiatry, law, and ministry (D. Min.).



ICUF Institutional Profiles



# THE INDEPENDENT COLLEGES AND UNIVERSITIES OF FLORIDA

## Institutional Profiles

P ICUF is comprised of a diverse group of 27 institutions offering a wide variety of undergraduate, graduate, and first-professional programs.

P Geographically dispersed throughout the state, the ICUF institutions served more than 101,000 students in the fall term alone.

P Also diverse in size, total fall 2001 institutional enrollments ranged from approximately 500-19,000 students.

P The five oldest institutions date back to the 1800s, while some others opened their doors as recently as the 1990s.

### Institutional Summaries

Institution/ Degrees Offered	*Year Established	Location	**Total Enrollment
<b>Associate's and Bachelor's Degrees</b>			
Florida Hospital College of Hlth Sciences	1992	Orlando	746
Florida College	1944	Temple Terrace	560
<b>Bachelor's Degrees</b>			
Bethune-Cookman College	1904	Daytona Beach	2,724
Clearwater Christian College	1966	Clearwater	704
Eckerd College	1959	St. Petersburg	1,582
Edward Waters College	1866	Jacksonville	1,320
Flagler College	1968	St. Augustine	1,852
Florida Memorial College	1879	Miami	2,154
Ringling School of Art & Design	1931	Sarasota	969
Southeastern College	1935	Lakeland	1,363
<b>Bachelor's &amp; Master's Degrees</b>			
Embry-Riddle Aeronautical University	1926	Daytona Beach	4,921
Florida Southern College	1885	Lakeland	2,496
International College	1990	Naples	1,227
Jacksonville University	1934	Jacksonville	2,519
Rollins College	1885	Winter Park	3,717
Saint Leo University	1889	St. Leo	9,931
University of Tampa	1931	Tampa	3,821
Warner Southern College	1964	Lake Wales	1,117
Webber International University	1927	Babson Park	498
<b>Bachelor's, Master's, and Doctoral Degrees</b>			
Barry University	1940	Miami Shores	8,691
Florida Institute of Technology	1958	Melbourne	4,409
Lynn University	1963	Boca Raton	2,006
Nova Southeastern University	1964	Ft. Lauderdale	19,067
Palm Beach Atlantic College	1968	West Palm Beach	2,544
Saint Thomas University	1962	Miami	2,412
Stetson University	1883	Deland	3,255
University of Miami	1925	Coral Gables	14,436
<b>ICUF Total</b>			<b>101,041</b>

\*Source: 2000 Higher Education Directory, Higher Education Publications, Inc.

\*\*Source: IPEDS 2001 Fall Enrollment Survey

## Fall 2001 Enrollments at ICUF Institutions by Degree Level

P Total enrollment at ICUF institutions rose by five and a half percent since last fall.

P Approximately 70% of all students served by ICUF institutions in fall 2001 were undergraduates, 23% were graduate students, and seven percent were pursuing first-professional degrees.

P The ICUF institutions had 6,718 students enrolled in first-professional programs in fields such as medicine, pharmacy, podiatry, optometry, dentistry, law, and ministry.

Institution/ Degrees Offered	*Year Established	Location	**Enrollment			
			Undergraduate	Graduate	Professional	Total
<b>Associate's and Bachelor's Degrees</b>						
Florida Hospital College of Hlth Sciences	1992	Orlando	746	----	----	746
Florida College	1944	Temple Terrace	560	----	----	560
<b>Bachelor's Degrees</b>						
Bethune-Cookman College	1904	Daytona Beach	2,724	----	----	2,724
Clearwater Christian College	1966	Clearwater	704	----	----	704
Eckerd College	1959	St. Petersburg	1,582	----	----	1,582
Edward Waters College	1866	Jacksonville	1,320	----	----	1,320
Flagler College	1968	St. Augustine	1,852	----	----	1,852
Florida Memorial College	1879	Miami	2,154	----	----	2,154
Ringling School of Art & Design	1931	Sarasota	969	----	----	969
Southeastern College	1935	Lakeland	1,363	----	----	1,363
<b>Bachelor's &amp; Master's Degrees</b>						
Embry-Riddle Aeronautical University	1926	Daytona Beach	4,641	280	----	4,921
Florida Southern College	1885	Lakeland	2,448	48	----	2,496
International College	1990	Naples	1,100	127	----	1,227
Jacksonville University	1934	Jacksonville	2,213	306	----	2,519
Rollins College	1885	Winter Park	2,972	745	----	3,717
Saint Leo University	1889	St. Leo	9,684	247	----	9,931
University of Tampa	1931	Tampa	3,328	493	----	3,821
Warner Southern College	1964	Lake Wales	1,082	35	----	1,117
Webber International University	1927	Babson Park	451	47	----	498
<b>Bachelor's, Master's, and Doctoral Degrees</b>						
Barry University	1940	Miami Shores	5,907	2,357	427	8,691
Florida Institute of Technology	1958	Melbourne	2,191	2,218	----	4,409
Lynn University	1963	Boca Raton	1,821	185	----	2,006
Nova Southeastern University	1964	Ft. Lauderdale	4,019	11,869	3,179	19,067
Palm Beach Atlantic College	1968	West Palm Beach	2,171	319	54	2,544
Saint Thomas University	1962	Miami	1,295	643	474	2,412
Stetson University	1883	Deland	2,174	331	750	3,255
University of Miami	1925	Coral Gables	9,359	3,243	1,834	14,436
<b>ICUF Total</b>			<b>70,830</b>	<b>23,493</b>	<b>6,718</b>	<b>101,041</b>

\*Source: 2000 Higher Education Directory, Higher Education Publications, Inc.

\*\*Source: IPEDS 2001 Fall Enrollment Survey

Fall 2001 Proportion of Students with Permanent Residence in Florida

P ICUF institutions provided postsecondary education to approximately 60,000 Florida residents in fall 2001.

P 57 percent of undergraduates attending ICUF institutions were Florida residents versus 90 percent for the SUS as a whole.

P 58 percent of all students attending ICUF institutions were Florida residents.

P As a group, graduate and professional students had the highest proportion of Florida residents (61 percent).

Institution	Total Enrollment			Undergraduates			Graduate Students			First- Professional Students		
	Total Students	Florida Residents No.	Percent	Total Students	Florida Residents No.	Percent	Total Students	Florida Residents No.	Percent	Total Students	Florida Residents No.	Percent
<b>Associate's and Bachelor's Degrees</b>												
Florida Hospital College of Hlth Sciences	746	669	90%	746	669	90%	Not Applicable			Not Applicable		
Florida College	560	172	31%	560	172	31%	Not Applicable			Not Applicable		
<b>Bachelor's Degrees</b>												
Bethune-Cookman College	2,724	1,780	65%	2,724	1,780	65%						
Clearwater Christian College	704	321	46%	704	321	46%						
Eckerd College	1,582	485	31%	1,582	485	31%						
Edward Waters College	1,320	1,084	82%	1,320	1,084	82%						
Flagler College	1,852	1,139	62%	1,852	1,139	62%	Not Applicable			Not Applicable		
Florida Memorial College	2,154	1,529	71%	2,154	1,529	71%						
Ringling School of Art & Design	969	472	49%	969	472	49%						
Southeastern College	1,363	695	51%	1,363	695	51%						
<b>Bachelor's &amp; Master's Degrees</b>												
Embry-Riddle Aeronautical University	4,921	1,185	24%	4,641	1,100	24%	280	85	30%			
Florida Southern College	2,496	2,034	81%	2,448	1,988	81%	48	46	96%			
International College	1,227	1,219	99%	1,100	1,092	99%	127	127	100%			
Jacksonville University	2,519	1,646	65%	2,213	1,356	61%	306	290	95%			
Rollins College	3,717	2,753	74%	2,972	2,092	70%	745	661	89%			
Saint Leo University	9,931	3,453	35%	9,684	3,223	33%	247	230	93%			
University of Tampa	3,821	1,978	52%	3,328	1,599	48%	493	379	77%			
Warner Southern College	1,117	985	88%	1,082	952	88%	35	33	94%			
Webber International University	498	326	65%	451	289	64%	47	37	79%			
<b>Bachelor's, Master's, and Doctoral Degrees</b>												
Barry University	8,691	7,448	86%	5,907	4,936	84%	2,357	2,162	92%	427	350	82%
Florida Institute of Technology	4,409	1,286	29%	2,191	681	31%	2,218	605	27%	----		
Lynn University	2,006	805	40%	1,821	673	37%	185	132	71%	----		
Nova Southeastern University	19,067	11,830	62%	4,019	3,174	79%	11,869	6,615	56%	3,179	2,041	64%
Palm Beach Atlantic College	2,544	1,926	76%	2,171	1,574	73%	319	302	95%	54	50	93%
Saint Thomas University	2,412	1,279	53%	1,295	789	61%	643	417	65%	474	73	15%
Stetson University	3,255	2,639	81%	2,174	1,657	76%	331	313	95%	750	669	89%
University of Miami	14,436	7,803	54%	9,359	4,876	52%	3,243	1,769	55%	1,834	1,158	63%
<b>ICUF Total</b>	<b>101,041</b>	<b>58,941</b>	<b>58%</b>	<b>70,830</b>	<b>40,397</b>	<b>57%</b>	<b>23,493</b>	<b>14,203</b>	<b>60%</b>	<b>6,718</b>	<b>4,341</b>	<b>65%</b>

Fall 2001 Racial/Ethnic Distribution of Florida Resident Students at ICUF Institutions by Degree Level

P The proportion of ICUF students from racial/ethnic minority groups was considerably higher among Florida residents than for all students combined.

P The proportion of total Florida resident students from minorities at ICUF institutions was 27% higher than that at SUS institutions (i.e. 42 percent in ICUF versus 33 percent in the SUS).

Degree Level	Total Students	Total Minorities		White		Black		Hispanic		*Other Minority		Racial/Ethnic Unknown	
		No.	Percent	No.	Percent	No.	Percent	No.	Percent	No.	Percent	No.	Percent
<b>Undergraduate Students</b>	40,397	16,975	<b>42%</b>	21,141	52%	8,719	22%	7,120	18%	1,136	3%	2,281	6%
<b>Graduate Students</b>	14,203	6,034	<b>42%</b>	7,360	52%	2,954	21%	2,715	19%	365	3%	809	6%
<b>First-Professional Students</b>	4,341	1,565	<b>36%</b>	2,541	59%	345	8%	876	20%	344	8%	235	5%
<b>Total Florida Resident Students</b>	58,941	24,574	<b>42%</b>	31,042	<b>53%</b>	12,018	<b>20%</b>	10,711	<b>18%</b>	1,845	<b>3%</b>	3,325	<b>6%</b>

\*Other minority includes American Indian/Alaska Native, and Asian/Pacific Islanders.

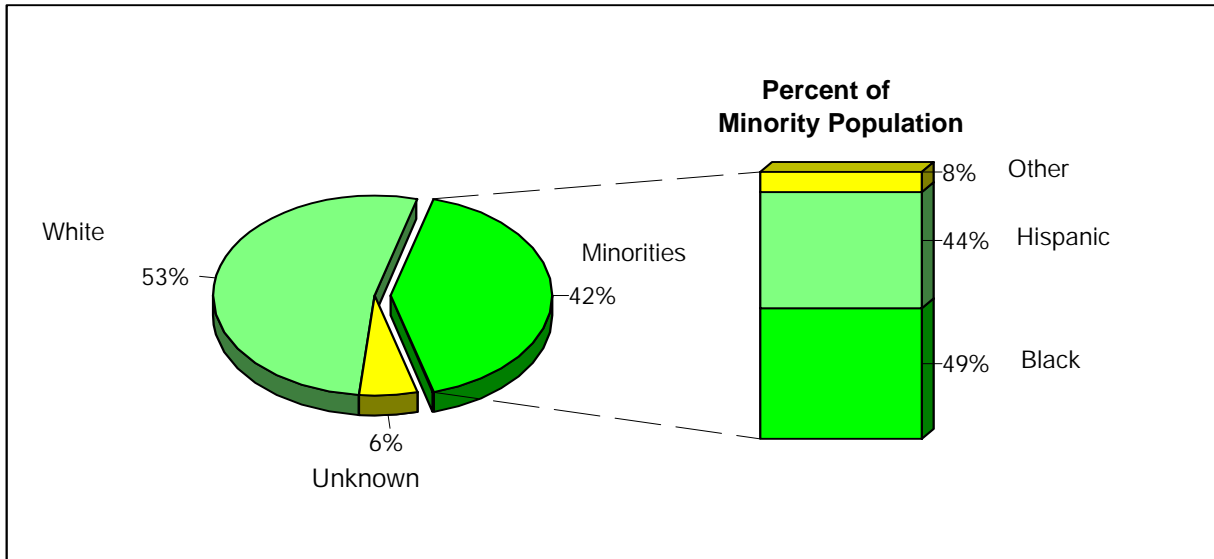
P ICUF institutions appear to be more accessible to Florida resident students from racial/ethnic minorities than the SUS.

Differences in the proportion of Florida resident minorities by degree level were as follows:

Degree Level	Percent Florida Resident Minorities	
	ICUF	SUS
Undergraduate Students	42%	35%
Graduate Students	42%	23%
First-Professional Students	36%	N/avail
<b>Total Students</b>	<b>42%</b>	<b>33%</b>

Figure 2

Fall 2001 Racial/Ethnic Distribution of Florida Resident Students  
Attending ICUF Institutions



P Overall, 42 percent of the students at ICUF institutions were from racial/ethnic minorities. Approximately 33 percent of the students at SUS institutions were from minorities (*Fact Book 2000-2001* of the State University System of Florida).

P At ICUF institutions, 62 percent of students were women, and 38 percent were men. Students at SUS institutions included 56 percent women and 44 percent men.

P As a group, bachelor's degree institutions had the highest proportion of minority students (62 percent).

P The ICUF group includes five institutions where the majority of students were from racial/ethnic minority groups: Barry University, Bethune-Cookman College, Edward Waters College, Florida Memorial College, and St. Thomas University.

Detailed data appear in the table that follows.

### Fall 2001 Racial/Ethnic Distribution of Students Attending ICUF Institutions

Institution	*Total Enrollment	Total Minorities		White		Black		Hispanic		**Other Minority		Nonresident Alien		Racial/Ethnic Unknown	
		No.	Percent	No.	Percent	No.	Percent	No.	Percent	No.	Percent	No.	Percent	No.	Percent
<b>Associate's and Bachelor's Degrees</b>															
Florida Hospital College of Hlth Sciences	746	319	43%	394	53%	108	14%	136	18%	75	10%	0	0%	33	4%
Florida College	560	32	6%	520	93%	10	2%	18	3%	4	1%	8	1%	0	0%
<b>Bachelor's Degrees</b>															
Bethune-Cookman College	2,724	2,454	90%	42	2%	2,412	89%	34	1%	8	<1%	188	7%	40	1%
Clearwater Christian College	704	51	7%	646	92%	15	2%	27	4%	9	1%	1	<1%	6	1%
Eckerd College	1,582	122	8%	1,226	77%	35	2%	63	4%	24	2%	157	10%	77	5%
Edward Waters College	1,320	1,209	92%	22	2%	1,197	91%	11	1%	1	<1%	35	3%	54	4%
Flagler College	1,852	87	5%	1,684	91%	22	1%	46	2%	19	1%	58	3%	23	1%
Florida Memorial College	2,154	1,929	90%	8	<1%	1,862	86%	66	3%	1	<1%	217	10%	0	0%
Ringling School of Art & Design	969	115	12%	784	81%	17	2%	68	7%	30	3%	70	7%	0	0%
Southeastern College	1,363	248	18%	1,078	79%	90	7%	133	10%	25	2%	7	1%	30	2%
<b>Bachelor's &amp; Master's Degrees</b>															
Embry-Riddle Aeronautical University	4,921	663	13%	3,293	67%	237	5%	257	5%	169	3%	877	18%	88	2%
Florida Southern College	2,496	310	12%	1,975	79%	151	6%	115	5%	44	2%	90	4%	121	5%
International College	1,227	289	24%	936	76%	119	10%	142	12%	28	2%	2	<1%	0	0%
Jacksonville University	2,519	510	20%	1,504	60%	351	14%	92	4%	67	3%	84	3%	421	17%
Rollins College	3,717	571	15%	2,774	75%	173	5%	281	8%	117	3%	131	4%	241	6%
Saint Leo University	9,931	3,404	34%	5,037	51%	2,584	26%	593	6%	227	2%	52	1%	1438	14%
University of Tampa	3,821	676	18%	2,491	65%	236	6%	337	9%	103	3%	261	7%	393	10%
Warner Southern College	1,117	292	26%	750	67%	200	18%	72	6%	20	2%	55	5%	20	2%
Webber International University	498	90	18%	278	56%	52	10%	32	6%	6	1%	130	26%	0	0%
<b>Bachelor's, Master's, and Doctoral Degrees</b>															
Barry University	8,691	4,424	51%	2,959	34%	1,708	20%	2,553	29%	163	2%	441	5%	867	10%
Florida Institute of Technology	4,409	634	14%	2,473	56%	313	7%	188	4%	133	3%	905	21%	397	9%
Lynn University	2,006	251	13%	939	47%	105	5%	120	6%	26	1%	356	18%	460	23%
Nova Southeastern University	19,067	7,825	41%	9,434	49%	4,160	22%	2,907	15%	758	4%	1037	5%	771	4%
Palm Beach Atlantic College	2,544	497	20%	1,803	71%	273	11%	188	7%	36	1%	153	6%	91	4%
Saint Thomas University	2,412	1,588	66%	458	19%	610	25%	951	39%	27	1%	223	9%	143	6%
Stetson University	3,255	420	13%	2,654	82%	144	4%	190	6%	86	3%	128	4%	53	<1%
University of Miami	14,436	5,447	38%	7,087	49%	1,306	9%	3,425	24%	716	5%	1,562	11%	340	2%
<b>ICUF Total</b>	<b>101,041</b>	<b>34,457</b>	<b>34%</b>	<b>53,249</b>	<b>53%</b>	<b>18,490</b>	<b>18%</b>	<b>13,045</b>	<b>13%</b>	<b>2,922</b>	<b>3%</b>	<b>7,228</b>	<b>7%</b>	<b>6,107</b>	<b>6%</b>

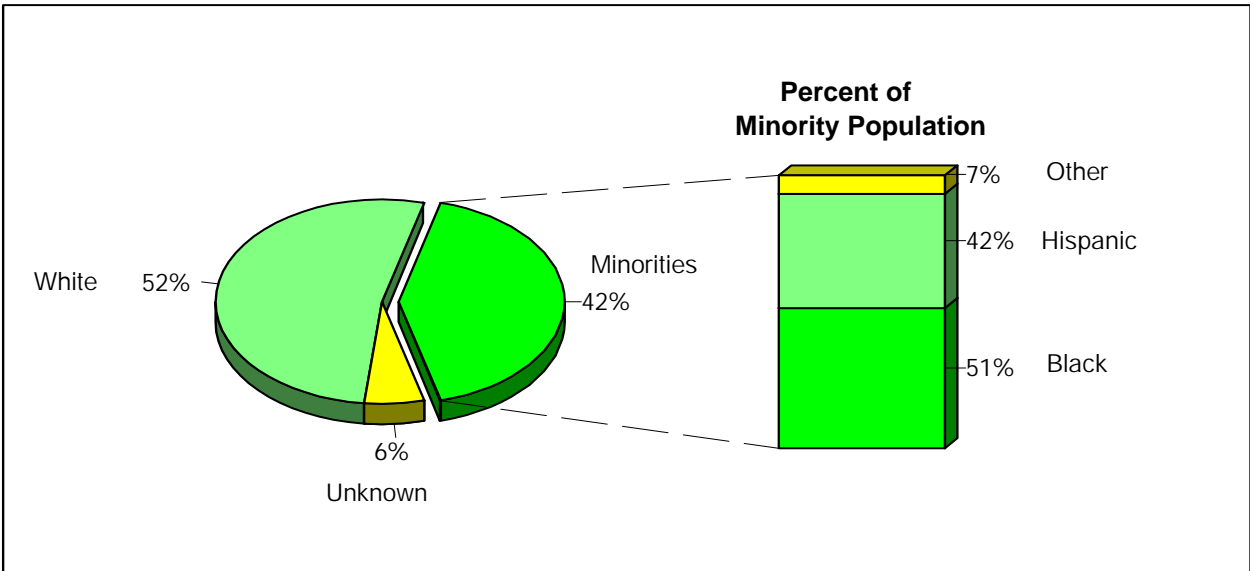
\*Note that data for institutions offering bachelor's, master's and/or doctoral degrees include students at all degree levels, not just undergraduates.

Source: 2001 IPEDS Fall Enrollment Survey

\*\*Other minority includes American Indian/Alaska Native, and Asian/Pacific Islanders.

**Figure 3**

Fall 2001 Racial/Ethnic Distribution of Florida Resident Undergraduate Students Attending ICUF Institutions



P Overall, 42 percent of the undergraduates at ICUF institutions were from racial/ethnic minorities. Approximately 35 percent of the undergraduate students at SUS institutions were from minorities (*Fact Book 2000-2001* of the State University System of Florida).

P At ICUF institutions, 62 percent of undergraduate students were women, and 38 percent were men. Students at SUS institutions included 57 percent women and 43 percent men.

P As a group, bachelor's degree institutions had the highest proportion of minority students (62 percent).

P The ICUF group includes six institutions where the majority of undergraduate students were from racial/ethnic minority groups: Barry University, Bethune-Cookman College, Edward Waters College, Florida Memorial College, Nova Southeastern University, and St. Thomas University.

Detailed data appear in the table that follows.

## Fall 2001 Racial/Ethnic Distribution of All Undergraduate Students Attending ICUF Institutions

Institution	Total Undergraduates		Total Minorities		White		Black		Hispanic		*Other Minority		Nonresident Alien		Racial/Ethnic Unknown	
	No.	Percent	No.	Percent	No.	Percent	No.	Percent	No.	Percent	No.	Percent	No.	Percent	No.	Percent
<b>Associate's and Bachelor's Degrees</b>																
Florida Hospital College of Hlth Sciences	746		319	43%	394	53%	108	14%	136	18%	75	10%	0	0%	33	4%
Florida College	560		32	6%	520	93%	10	2%	18	3%	4	1%	8	1%	0	0%
<b>Bachelor's Degrees</b>																
Bethune-Cookman College	2,724		2,454	90%	42	2%	2,412	89%	34	1%	8	<1%	188	7%	40	1%
Clearwater Christian College	704		51	7%	646	92%	15	2%	27	4%	9	1%	1	<1%	6	1%
Eckerd College	1,582		122	8%	1,226	77%	35	2%	63	4%	24	2%	157	10%	77	5%
Edward Waters College	1,320		1,209	92%	22	2%	1,197	91%	11	1%	1	<1%	35	3%	54	4%
Flagler College	1,852		87	5%	1,684	91%	22	1%	46	2%	19	1%	58	3%	23	1%
Florida Memorial College	2,154		1,929	90%	8	<1%	1,862	86%	66	3%	1	<1%	217	10%	0	0%
Ringling School of Art & Design	969		115	12%	784	81%	17	2%	68	7%	30	3%	70	7%	0	0%
Southeastern College	1,363		248	18%	1,078	79%	90	7%	133	10%	25	2%	7	1%	30	2%
<b>Bachelor's &amp; Master's Degrees</b>																
Embry-Riddle Aeronautical University	4,641		632	14%	3,179	68%	217	5%	252	5%	163	4%	744	16%	86	2%
Florida Southern College	2,448		305	12%	1,935	79%	150	6%	114	5%	41	2%	88	4%	120	5%
International College	1,100		263	24%	835	76%	104	9%	132	12%	27	2%	2	<1%	0	0%
Jacksonville University	2,213		465	21%	1,373	62%	316	14%	85	4%	64	3%	73	3%	302	14%
Rollins College	2,972		459	15%	2,237	75%	139	5%	234	8%	86	3%	86	3%	190	6%
Saint Leo University	9,684		3,362	35%	4,874	50%	2,559	26%	582	6%	221	2%	43	<1%	1405	15%
University of Tampa	3,328		606	18%	2,191	66%	217	7%	304	9%	85	3%	157	5%	374	11%
Warner Southern College	1,082		286	26%	723	67%	194	18%	72	7%	20	2%	53	5%	20	2%
Webber International University	451		83	18%	245	54%	47	10%	30	7%	6	1%	123	27%	0	0%
<b>Bachelor's, Master's, and Doctoral Degrees</b>																
Barry University	5,907		3,104	53%	1,881	32%	1,098	19%	1,926	33%	80	1%	323	5%	599	10%
Florida Institute of Technology	2,191		247	11%	1,235	56%	87	4%	103	5%	57	3%	571	26%	138	6%
Lynn University	1,821		230	13%	893	49%	98	5%	112	6%	20	1%	324	18%	374	21%
Nova Southeastern University	4,019		2,069	51%	1,419	35%	1,036	26%	921	23%	112	3%	327	8%	204	5%
Palm Beach Atlantic College	2,171		402	19%	1,556	72%	224	10%	151	7%	27	1%	132	6%	81	4%
Saint Thomas University	1,295		969	75%	130	10%	330	25%	630	49%	9	1%	180	14%	16	1%
Stetson University	2,174		262	12%	1,789	82%	80	4%	123	6%	59	3%	87	4%	36	<1%
University of Miami	9,359		3,811	41%	4,524	48%	937	10%	2,380	25%	494	5%	791	8%	233	2%
<b>ICUF Total</b>	<b>70,830</b>		<b>24,121</b>	<b>34%</b>	<b>37,423</b>	<b>53%</b>	<b>13,601</b>	<b>19%</b>	<b>8,753</b>	<b>12%</b>	<b>1,767</b>	<b>2%</b>	<b>4,845</b>	<b>7%</b>	<b>4,441</b>	<b>6%</b>

\*Other minority includes American Indian/Alaska Native, and Asian/Pacific Islanders.

Racial/Ethnic Distribution of Florida Resident Undergraduates Enrolled in Fall 2001

P 57 percent of all undergraduates enrolled at ICUF institutions were Florida residents.  
P 42 percent of resident undergraduates were from minorities, and 62 percent were women.

Institution	Total Undergraduates	Total Minorities		White		Black		Hispanic		*Other Minority		Racial/Ethnic Unknown	
		No.	Percent	No.	Percent	No.	Percent	No.	Percent	No.	Percent	No.	Percent
<b>Associate's and Bachelor's Degrees</b>													
Florida Hospital College of Hlth Sciences	669	303	45%	340	51%	101	15%	130	19%	72	11%	26	4%
Florida College	172	21	12%	151	88%	8	5%	13	8%	0	0%	0	0%
<b>Bachelor's Degrees</b>													
Bethune-Cookman College	1,780	1,728	97%	27	2%	1,697	95%	24	1%	7	0%	25	1%
Clearwater Christian College	321	34	11%	285	89%	9	3%	21	7%	4	1%	2	1%
Eckerd College	485	63	13%	395	81%	8	2%	33	7%	22	5%	27	6%
Edward Waters College	1,084	1,027	95%	22	2%	1,021	94%	6	1%	0	0%	35	3%
Flagler College	1,139	69	6%	1,052	92%	17	1%	37	3%	15	1%	18	2%
Florida Memorial College	1,529	1,521	99%	8	1%	1,462	96%	59	4%	0	0%	0	0%
Ringling School of Art & Design	472	74	16%	398	84%	14	3%	44	9%	16	3%	0	0%
Southeastern College	695	161	23%	491	71%	55	8%	89	13%	17	2%	43	6%
<b>Bachelor's &amp; Master's Degrees</b>													
Embry-Riddle Aeronautical University	1,100	212	19%	857	78%	59	5%	112	10%	41	4%	31	3%
Florida Southern College	1,988	274	14%	1,595	80%	132	7%	104	5%	38	2%	119	6%
International College	1,092	262	24%	830	76%	104	10%	132	12%	26	2%	0	0%
Jacksonville University	1,356	328	24%	846	62%	229	17%	53	4%	46	3%	182	13%
Rollins College	2,092	394	19%	1,587	76%	118	6%	205	10%	71	3%	111	5%
Saint Leo University	3,223	671	21%	2,207	68%	393	12%	214	7%	64	2%	345	11%
University of Tampa	1,599	355	22%	1,052	66%	110	7%	204	13%	41	3%	192	12%
Warner Southern College	952	263	28%	672	71%	183	19%	67	7%	13	1%	17	2%
Webber International University	289	77	27%	212	73%	42	15%	29	10%	6	2%	0	0%
<b>Bachelor's, Master's, and Doctoral Degrees</b>													
Barry University	4,936	2,864	58%	1,557	32%	995	20%	1,801	36%	68	1%	515	10%
Florida Institute of Technology	681	110	16%	508	75%	35	5%	50	7%	25	4%	63	9%
Lynn University	673	162	24%	356	53%	74	11%	78	12%	10	1%	155	23%
Nova Southeastern University	3,174	1,757	55%	1,277	40%	748	24%	905	29%	104	3%	140	4%
Palm Beach Atlantic College	1,574	364	23%	1,132	72%	210	13%	134	9%	20	1%	78	5%
Saint Thomas University	789	696	88%	93	12%	225	29%	465	59%	6	1%	0	0%
Stetson University	1,657	210	13%	1,423	86%	57	3%	103	6%	50	3%	24	1%
University of Miami	4,876	2,975	61%	1,768	36%	613	13%	2,008	41%	354	7%	133	3%
<b>ICUF Total</b>	<b>40,397</b>	<b>16,975</b>	<b>42%</b>	<b>21,141</b>	<b>52%</b>	<b>8,719</b>	<b>22%</b>	<b>7,120</b>	<b>18%</b>	<b>1,136</b>	<b>3%</b>	<b>2,281</b>	<b>6%</b>

\*Other minority includes American Indian/Alaska Native, and Asian/Pacific Islanders.

Racial/Ethnic Distribution of Full-time Florida Resident Undergraduates Enrolled in Fall 2001

P 75 percent of Florida resident undergraduates were full-time students in Fall 2001.

Institution	Total Undergraduates	Total Minorities		White		Black		Hispanic		*Other Minority		Racial/Ethnic Unknown	
		No.	Percent	No.	Percent	No.	Percent	No.	Percent	No.	Percent	No.	Percent
<b>Associate's and Bachelor's Degrees</b>													
Florida Hospital College of Hlth Sciences	404	191	47%	198	49%	63	16%	87	22%	41	10%	15	4%
Florida College	155	19	12%	136	88%	8	5%	11	7%	0	0%	0	0%
<b>Bachelor's Degrees</b>													
Bethune-Cookman College	1,620	1,573	97%	23	1%	1,545	95%	23	1%	5	<1%	24	1%
Clearwater Christian College	301	33	11%	266	88%	8	3%	21	7%	4	1%	2	1%
Eckerd College	476	63	13%	388	82%	8	2%	33	7%	22	5%	25	5%
Edward Waters College	1,053	1,000	95%	22	2%	995	94%	5	<1%	0	0%	31	3%
Flagler College	1,104	64	6%	1,023	93%	15	1%	34	3%	15	1%	17	2%
Florida Memorial College	1,305	1,299	100%	6	<1%	1,247	96%	52	4%	0	0%	0	0%
Ringling School of Art & Design	455	73	16%	382	84%	13	3%	44	10%	16	4%	0	0%
Southeastern College	604	150	25%	436	72%	50	8%	86	14%	14	2%	18	3%
<b>Bachelor's &amp; Master's Degrees</b>													
Embry-Riddle Aeronautical University	949	184	19%	737	78%	46	5%	100	11%	38	4%	28	3%
Florida Southern College	1,304	170	13%	1,126	86%	74	6%	71	5%	25	2%	8	1%
International College	768	196	26%	572	74%	81	11%	96	13%	19	2%	0	0%
Jacksonville University	1,064	267	25%	659	62%	181	17%	47	4%	39	4%	138	13%
Rollins College	1,530	302	20%	1,135	74%	86	6%	162	11%	54	4%	93	6%
Saint Leo University	2,030	451	22%	1,378	68%	252	12%	151	7%	48	2%	201	10%
University of Tampa	1,172	255	22%	774	66%	76	6%	149	13%	30	3%	143	12%
Warner Southern College	849	238	28%	594	70%	159	19%	67	8%	12	1%	17	2%
Webber International University	232	67	29%	165	71%	40	17%	22	9%	5	2%	0	0%
<b>Bachelor's, Master's, and Doctoral Degrees</b>													
Barry University	2,097	1,326	63%	506	24%	418	20%	877	42%	31	1%	265	13%
Florida Institute of Technology	612	101	17%	461	75%	32	5%	46	8%	23	4%	50	8%
Lynn University	421	99	24%	218	52%	37	9%	58	14%	4	1%	104	25%
Nova Southeastern University	2,115	1,185	56%	836	40%	471	22%	631	30%	83	4%	94	4%
Palm Beach Atlantic College	1,349	314	23%	994	74%	177	13%	118	9%	19	1%	41	3%
Saint Thomas University	654	578	88%	76	12%	184	28%	389	59%	5	1%	0	0%
Stetson University	1,553	196	13%	1,340	86%	53	3%	96	6%	47	3%	17	1%
University of Miami	4,233	2,531	60%	1,576	37%	493	12%	1,698	40%	340	8%	126	3%
<b>ICUF Total</b>	<b>30,409</b>	<b>12,925</b>	<b>43%</b>	<b>16,027</b>	<b>53%</b>	<b>6,812</b>	<b>22%</b>	<b>5,174</b>	<b>17%</b>	<b>939</b>	<b>3%</b>	<b>1,457</b>	<b>5%</b>

\*Other minority includes American Indian/Alaska Native, and Asian/Pacific Islanders.

Racial/Ethnic Distribution of Part-time Florida Resident Undergraduates Enrolled in Fall 2001

P The racial/ethnic distribution and proportion of total minorities is similar for full-time and part-time students.

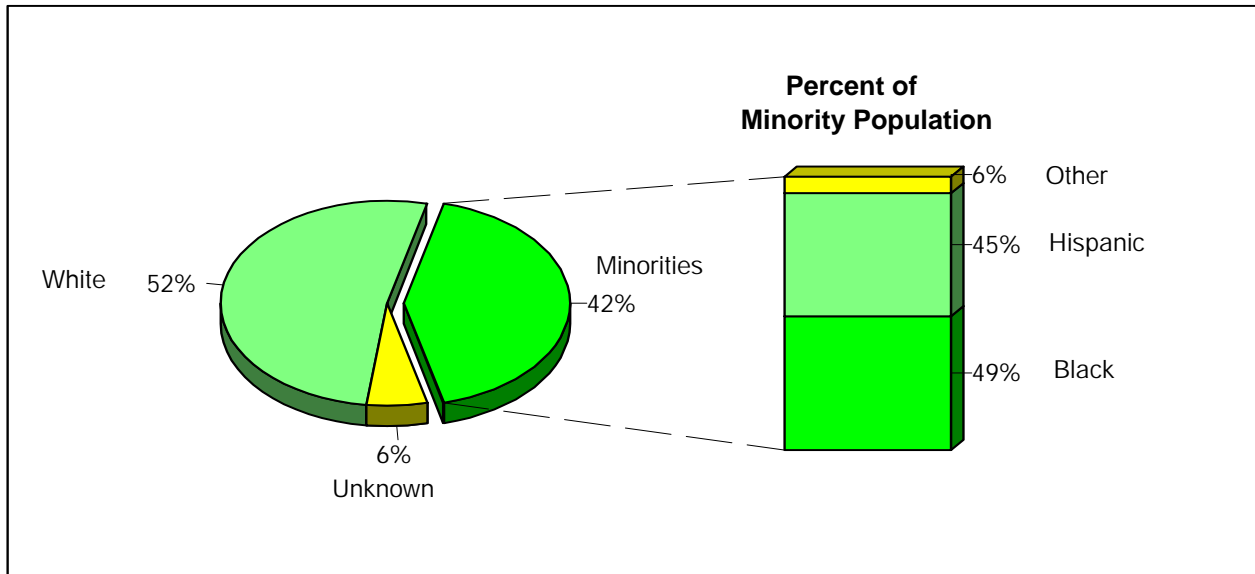
P A slightly greater proportion of women attend part-time (65 percent) than full-time (61 percent).

Institution	Total Undergraduates	Total Minorities		White		Black		Hispanic		*Other Minority		Racial/Ethnic Unknown	
		No.	Percent	No.	Percent	No.	Percent	No.	Percent	No.	Percent	No.	Percent
<b>Associate's and Bachelor's Degrees</b>													
Florida Hospital College of Hlth Sciences	265	112	42%	142	54%	38	14%	43	16%	31	12%	11	4%
Florida College	17	2	12%	15	88%	0	0%	2	12%	0	0%	0	0%
<b>Bachelor's Degrees</b>													
Bethune-Cookman College	160	155	97%	4	3%	152	95%	1	1%	2	1%	1	1%
Clearwater Christian College	20	1	5%	19	95%	1	5%	0	0%	0	0%	0	0%
Eckerd College	9	0	0%	7	78%	0	0%	0	0%	0	0%	2	22%
Edward Waters College	31	27	87%	0	0%	26	84%	1	3%	0	0%	4	13%
Flagler College	35	5	14%	29	83%	2	6%	3	9%	0	0%	1	3%
Florida Memorial College	224	222	99%	2	1%	215	96%	7	3%	0	0%	0	0%
Ringling School of Art & Design	17	1	6%	16	94%	1	6%	0	0%	0	0%	0	0%
Southeastern College	91	11	12%	55	60%	5	5%	3	3%	3	3%	25	27%
<b>Bachelor's &amp; Master's Degrees</b>													
Embry-Riddle Aeronautical University	151	28	19%	120	79%	13	9%	12	8%	3	2%	3	2%
Florida Southern College	684	104	15%	469	69%	58	8%	33	5%	13	2%	111	16%
International College	324	66	20%	258	80%	23	7%	36	11%	7	2%	0	0%
Jacksonville University	292	61	21%	187	64%	48	16%	6	2%	7	2%	44	15%
Rollins College	562	92	16%	452	80%	32	6%	43	8%	17	3%	18	3%
Saint Leo University	1,193	220	18%	829	69%	141	12%	63	5%	16	1%	144	12%
University of Tampa	427	100	23%	278	65%	34	8%	55	13%	11	3%	49	11%
Warner Southern College	103	25	24%	78	76%	24	23%	0	0%	1	1%	0	0%
Webber International University	57	10	18%	47	82%	2	4%	7	12%	1	2%	0	0%
<b>Bachelor's, Master's, and Doctoral Degrees</b>													
Barry University	2,839	1,538	54%	1,051	37%	577	20%	924	33%	37	1%	250	9%
Florida Institute of Technology	69	9	13%	47	68%	3	4%	4	6%	2	3%	13	19%
Lynn University	252	63	25%	138	55%	37	15%	20	8%	6	2%	51	20%
Nova Southeastern University	1,059	572	54%	441	42%	277	26%	274	26%	21	2%	46	4%
Palm Beach Atlantic College	225	50	22%	138	61%	33	15%	16	7%	1	<1%	37	16%
Saint Thomas University	135	118	87%	17	13%	41	30%	76	56%	1	1%	0	0%
Stetson University	104	14	13%	83	80%	4	4%	7	7%	3	3%	7	7%
University of Miami	643	444	69%	192	30%	120	19%	310	48%	14	2%	7	1%
<b>ICUF Total</b>	<b>9,988</b>	<b>4,050</b>	<b>41%</b>	<b>5,114</b>	<b>51%</b>	<b>1,907</b>	<b>19%</b>	<b>1,946</b>	<b>19%</b>	<b>197</b>	<b>2%</b>	<b>824</b>	<b>8%</b>

\*Other minority includes American Indian/Alaska Native, and Asian/Pacific Islanders.

**Figure 4**

Fall 2001 Racial/Ethnic Distribution of Florida Resident Students Pursuing Graduate Degrees at ICUF Institutions



P Seventeen ICUF institutions offer graduate degree programs (see the table below).

P Overall, 42 percent of the graduate students at ICUF institutions were from racial/ethnic minorities. Approximately 23 percent of the graduate students at SUS institutions were from minorities (*Fact Book 2000-2001* of the State University System of Florida).

P At ICUF institutions, 67 percent of graduate students were women, and 33 percent were men. Students at SUS institutions included 56 percent women and 44 percent men.

P The ICUF group includes one institution (St. Thomas University) where the majority of graduate students were from racial/ethnic minority groups. Barry University had a near majority with 50 percent of graduate students from minorities. Two SUS institutions, Florida A and M and Florida International University, had a majority of graduate students from racial/ethnic minority groups.

Detailed data appear in the table that follows.

## Fall 2001 Racial/Ethnic Distribution of Florida Resident Graduate Students Attending ICUF Institutions

P 60 percent of all graduate students enrolled at ICUF institutions were Florida residents in Fall 2001.

Institution	Total Students	Total Minorities		White		Black		Hispanic		*Other Minority		Racial/Ethnic Unknown	
		No.	Percent	No.	Percent	No.	Percent	No.	Percent	No.	Percent	No.	Percent
<b>Bachelor's and Master's Degrees</b>													
Embry-Riddle Aeronautical University	85	19	22%	64	75%	13	15%	3	4%	3	4%	2	2%
Florida Southern College	46	5	11%	39	85%	1	2%	1	2%	3	7%	2	4%
International College	127	26	20%	101	80%	15	12%	10	8%	1	1%	0	0%
Jacksonville University	290	43	15%	126	43%	35	12%	5	2%	3	1%	121	42%
Rollins College	661	110	17%	503	76%	34	5%	47	7%	29	4%	48	7%
Saint Leo University	230	41	18%	156	68%	25	11%	11	5%	5	2%	33	14%
University of Tampa	379	66	17%	295	78%	18	5%	30	8%	18	5%	18	5%
Warner Southern College	33	6	18%	27	82%	6	18%	0	0%	0	0%	0	0%
Webber International University	37	7	19%	30	81%	5	14%	2	5%	0	0%	0	0%
<b>Master's, and Doctoral Degrees</b>													
Barry University	2,162	1,132	52%	821	38%	544	25%	536	25%	52	2%	209	10%
Florida Institute of Technology	605	99	16%	428	71%	37	6%	32	5%	30	5%	78	13%
Lynn University	132	20	15%	39	30%	7	5%	9	7%	4	3%	73	55%
Nova Southeastern University	6,615	3,146	48%	3,285	50%	1,784	27%	1,214	18%	148	2%	184	3%
Palm Beach Atlantic College	302	77	25%	217	72%	46	15%	25	8%	6	2%	8	3%
Saint Thomas University	417	325	78%	78	19%	186	45%	138	33%	1	<1%	14	3%
Stetson University	313	47	15%	257	82%	25	8%	13	4%	9	3%	9	3%
University of Miami	1,769	865	49%	894	51%	173	10%	639	36%	53	3%	10	1%
<b>ICUF Totals</b>	<b>14,203</b>	<b>6,034</b>	<b>42%</b>	<b>7,360</b>	<b>52%</b>	<b>2,954</b>	<b>21%</b>	<b>2,715</b>	<b>19%</b>	<b>365</b>	<b>3%</b>	<b>809</b>	<b>6%</b>

\*Other minority includes American Indian/Alaska Native, and Asian/Pacific Islanders.

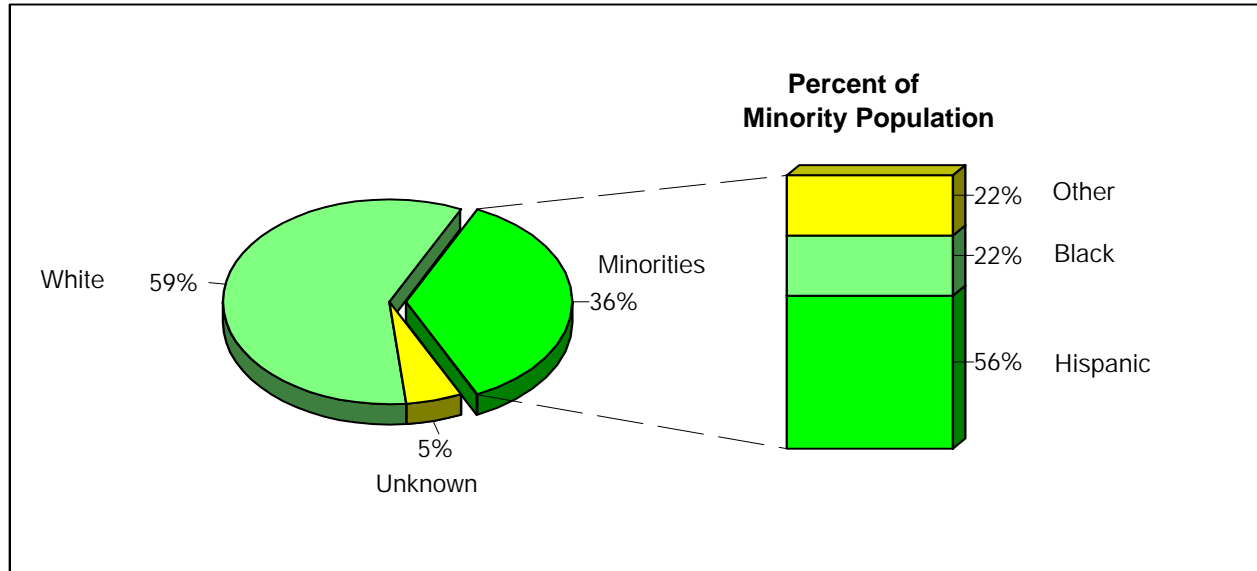
## Fall 2001 Racial/Ethnic Distribution of Graduate Students Attending ICUF Institutions

Institution	Total Students	Total Minorities		White		Black		Hispanic		*Other Minority		Nonresident Alien		Racial/Ethnic Unknown	
		No.	Percent	No.	Percent	No.	Percent	No.	Percent	No.	Percent	No.	Percent	No.	Percent
<b>Bachelor's &amp; Master's Degrees</b>															
Embry-Riddle Aeronautical University	280	31	11%	114	41%	20	7%	5	2%	6	2%	133	48%	2	1%
Florida Southern College	48	5	10%	40	83%	1	2%	1	2%	3	6%	2	4%	1	2%
International College	127	26	20%	101	80%	15	12%	10	8%	1	1%	0	0%	0	0%
Jacksonville University	306	45	15%	131	43%	35	11%	7	2%	3	<1%	11	4%	119	39%
Rollins College	745	112	15%	537	72%	34	5%	47	6%	31	4%	45	6%	51	7%
Saint Leo University	247	42	17%	163	66%	25	10%	11	4%	6	<1%	9	4%	33	13%
University of Tampa	493	70	14%	300	61%	19	4%	33	7%	18	4%	104	21%	19	4%
Warner Southern College	35	6	17%	27	77%	6	17%	0	0%	0	0%	2	6%	0	0%
Webber International University	47	7	15%	33	70%	5	11%	2	4%	0	0%	7	15%	0	0%
<b>Master's, and Doctoral Degrees</b>															
Barry University	2,357	1,167	50%	869	37%	560	24%	554	24%	53	2%	106	4%	215	9%
Florida Institute of Technology	2,218	387	17%	1,238	56%	226	10%	85	4%	76	3%	334	15%	259	12%
Lynn University	185	21	11%	46	25%	7	4%	8	4%	6	3%	32	17%	86	46%
Nova Southeastern University	11,869	4,610	39%	6,234	53%	2,923	25%	1,427	12%	260	2%	588	5%	437	4%
Palm Beach Atlantic College	319	77	24%	217	68%	46	14%	25	8%	6	2%	17	5%	8	3%
Saint Thomas University	643	402	63%	106	16%	219	34%	175	27%	8	<1%	37	6%	98	15%
Stetson University	331	47	14%	262	79%	25	8%	13	4%	9	3%	13	4%	9	3%
University of Miami	3,243	1,028	32%	1,485	46%	227	7%	716	22%	85	3%	716	22%	14	<1%
<b>ICUF Totals</b>	<b>23,493</b>	<b>8,083</b>	<b>34%</b>	<b>11,903</b>	<b>51%</b>	<b>4,393</b>	<b>19%</b>	<b>3,119</b>	<b>13%</b>	<b>571</b>	<b>2%</b>	<b>2,156</b>	<b>9%</b>	<b>1,351</b>	<b>6%</b>

\*Other minority includes American Indian/Alaska Native, and Asian/Pacific Islanders.

**Figure 5**

Fall 2001 Racial/Ethnic Distribution of Florida Resident Students Pursuing First-Professional Degrees at ICUF Institutions



P Six ICUF institutions offer first-professional degree programs. Four offer law degrees. Other fields include dentistry, medicine, optometry, pharmacy, podiatry, and ministry.

P Overall, 36 percent of the first-professional students at ICUF institutions were from racial/ethnic minorities.

P At ICUF institutions, 53 percent of first-professional students were women, and 47 percent were men.

Detailed data appear in the table that follows.

### Fall 2001 Racial/Ethnic Distribution of First-Professional Students Attending ICUF Institutions

Institution	Total Students	Total Minorities		White		Black		Hispanic		*Other Minority		Nonresident Alien		Racial/Ethnic Unknown	
		No.	Percent	No.	Percent	No.	Percent	No.	Percent	No.	Percent	No.	Percent	No.	Percent
<b>First-Professional Degrees</b>															
Barry University	427	153	36%	209	49%	50	12%	73	17%	30	7%	12	3%	53	12%
Nova Southeastern University	3,179	1,146	36%	1,781	56%	201	6%	559	18%	386	12%	122	4%	130	4%
Palm Beach Atlantic College	54	18	33%	30	56%	3	6%	12	22%	3	6%	4	7%	2	4%
Saint Thomas University	474	217	46%	222	47%	61	13%	146	31%	10	2%	6	<1%	29	6%
Stetson University	750	111	15%	603	80%	39	5%	54	7%	18	2%	28	4%	8	1%
University of Miami	1,834	608	33%	1,078	59%	142	8%	329	18%	137	7%	55	3%	93	5%
<b>ICUF Totals</b>	<b>6,718</b>	<b>2,253</b>	<b>34%</b>	<b>3,923</b>	<b>58%</b>	<b>496</b>	<b>7%</b>	<b>1,173</b>	<b>17%</b>	<b>584</b>	<b>9%</b>	<b>227</b>	<b>3%</b>	<b>315</b>	<b>5%</b>

\*Other minority includes American Indian/Alaska Native, and Asian/Pacific Islanders.

### Fall 2001 Racial/Ethnic Distribution of Florida Resident First-Professional Students Attending ICUF Institutions

P 65 percent of first-professional students attending ICUF institutions were Florida residents.

Institution	Total Students	Total Minorities		White		Black		Hispanic		*Other Minority		Racial/Ethnic Unknown	
		No.	Percent	No.	Percent	No.	Percent	No.	Percent	No.	Percent	No.	Percent
<b>First-Professional Degrees</b>													
Barry University	350	127	36%	184	53%	41	12%	64	18%	22	6%	39	11%
Nova Southeastern University	2,041	774	38%	1,173	57%	156	8%	416	20%	202	10%	94	5%
Palm Beach Atlantic College	50	18	36%	30	60%	3	6%	12	24%	3	6%	2	4%
Saint Thomas University	73	48	66%	21	29%	11	15%	36	49%	1	1%	4	5%
Stetson University	669	105	16%	556	83%	37	6%	51	8%	17	3%	8	1%
University of Miami	1,158	493	43%	577	50%	97	8%	297	26%	99	9%	88	8%
<b>ICUF Totals</b>	<b>4,341</b>	<b>1,565</b>	<b>36%</b>	<b>2,541</b>	<b>59%</b>	<b>345</b>	<b>8%</b>	<b>876</b>	<b>20%</b>	<b>344</b>	<b>8%</b>	<b>235</b>	<b>5%</b>

\*Other minority includes American Indian/Alaska Native, and Asian/Pacific Islanders.

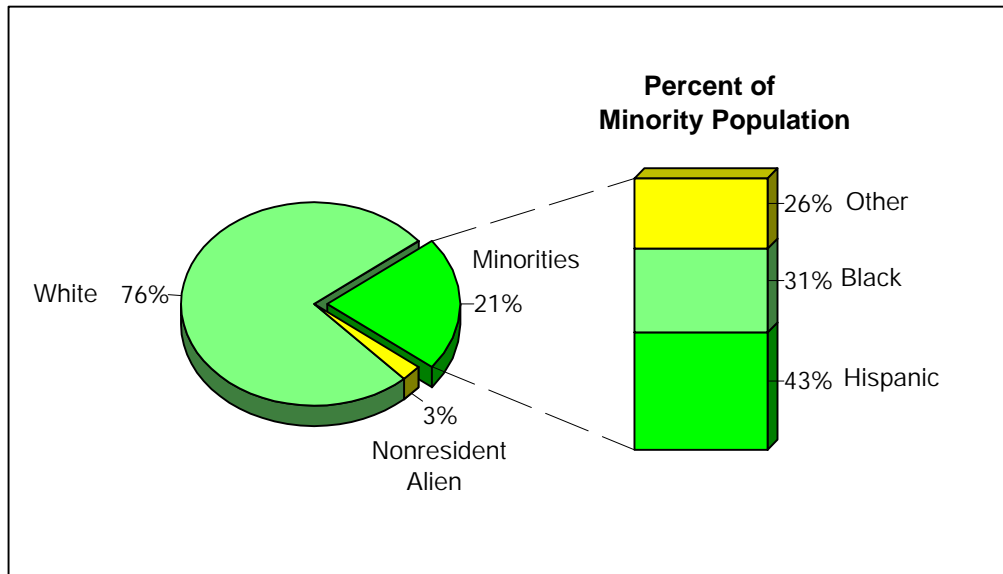


## The Full-Time Faculty



**Figure 6**

Fall 2001 Racial/Ethnic Distribution of Full-Time Faculty



P Overall, 21 percent of the full-time faculty at ICUF institutions were from racial/ethnic minorities. Approximately 20 percent of the full-time faculty at SUS institutions were from minorities (*Fact Book 2000-2001* of the State University System of Florida).

P At ICUF institutions, 35 percent of full-time faculty were women, and 65 percent were men. Full-time faculty at SUS institutions included 29 percent women and 71 percent men.

P As a group, bachelor's degree institutions had the highest proportion of minority faculty (36 percent).

Detailed data appear in the table that follows.

## Fall 2001 Racial/Ethnic Distribution of Full-Time Faculty

Institution	Total Faculty	Total Minorities		White		Black		Hispanic		*Other Minority		Nonresident Alien		Race/Ethnic Unknown	
		No.	Percent	No.	Percent	No.	Percent	No.	Percent	No.	Percent	No.	Percent	No.	Percent
<b>Associate's and Bachelor's Degrees</b>															
Florida Hospital College of Hlth Sciences	32	9	28%	23	72%	5	16%	3	9%	1	3%	0	0%	0	0%
Florida College	30	2	7%	28	93%	0	0%	2	7%	0	0%	0	0%	0	0%
<b>Bachelor's Degrees</b>															
Bethune-Cookman College	138	89	64%	49	36%	74	54%	1	1%	14	10%	0	0%	0	0%
Clearwater Christian College	32	0	0%	32	100%	0	0%	0	0%	0	0%	0	0%	0	0%
Eckerd College	97	13	13%	84	87%	3	3%	4	4%	6	6%	0	0%	0	0%
Edward Waters College	38	28	74%	10	26%	28	74%	0	0%	0	0%	0	0%	0	0%
Flagler College	62	1	2%	61	98%	1	2%	0	0%	0	0%	0	0%	0	0%
Florida Memorial College	83	62	75%	21	25%	50	60%	7	8%	5	6%	0	0%	0	0%
Ringling School of Art & Design	55	4	7%	51	93%	1	2%	1	2%	2	4%	0	0%	0	0%
Southeastern College	43	3	7%	39	91%	1	2%	2	5%	0	0%	1	2%	0	0%
<b>Bachelor's &amp; Master's Degrees</b>															
Embry-Riddle Aeronautical University	173	19	11%	154	89%	7	4%	1	1%	11	6%	0	0%	0	0%
Florida Southern College	107	6	6%	100	93%	2	2%	3	3%	1	1%	0	0%	1	1%
International College	40	3	8%	36	90%	3	8%	0	0%	0	0%	1	3%	0	0%
Jacksonville University	105	3	3%	102	97%	2	2%	1	1%	0	0%	0	0%	0	0%
Rollins College	171	10	6%	152	89%	2	1%	6	4%	2	1%	8	5%	1	1%
Saint Leo University	67	3	4%	63	94%	1	1%	0	0%	2	3%	1	1%	0	0%
University of Tampa	145	5	3%	140	97%	1	1%	3	2%	1	1%	0	0%	0	0%
Warner Southern College	41	0	0%	41	100%	0	0%	0	0%	0	0%	0	0%	0	0%
Webber International University	16	1	6%	14	88%	0	0%	1	6%	0	0%	1	6%	0	0%
<b>Bachelor's, Master's, and Doctoral Degrees</b>															
Barry University	326	73	22%	246	75%	20	6%	41	13%	12	4%	4	1%	3	1%
Florida Institute of Technology	188	21	11%	153	81%	1	1%	1	1%	19	10%	12	6%	2	1%
Lynn University	86	10	12%	76	88%	4	5%	2	2%	4	5%	0	0%	0	0%
Nova Southeastern University	486	84	17%	389	80%	23	5%	32	7%	29	6%	12	2%	1	<1%
Palm Beach Atlantic College	93	4	4%	87	94%	2	2%	2	2%	0	0%	2	2%	0	0%
Saint Thomas University	83	23	28%	59	71%	5	6%	16	19%	2	2%	1	1%	0	0%
Stetson University	196	22	11%	173	88%	9	5%	9	5%	4	2%	0	0%	1	1%
University of Miami	1,963	537	27%	1,343	68%	75	4%	309	16%	153	8%	83	4%	0	0%
<b>ICUF Totals</b>	<b>4,896</b>	<b>1,035</b>	<b>21%</b>	<b>3,726</b>	<b>76%</b>	<b>320</b>	<b>7%</b>	<b>447</b>	<b>9%</b>	<b>268</b>	<b>5%</b>	<b>126</b>	<b>3%</b>	<b>9</b>	<b>0%</b>

\*Other minority includes American Indian/Alaska Native, and Asian/Pacific Islanders.

## Fall 2001 Full-Time Faculty Undergraduate Teaching Loads

P 64 percent of full-time faculty at ICUF institutions had undergraduate teaching loads of nine or more credits.

P Approximately 86 percent of faculty at institutions offering the bachelor's as the highest degree taught course loads of nine or more credits.

P Master's and doctoral institutions had lower proportions of faculty with undergraduate teaching loads of nine or more credits (46 and 49 percent, respectively). Except for the University of Miami, institutions did not indicate whether these faculty also taught graduate courses or were engaged in research as part of their load. At the University of Miami, faculty teaching undergraduate courses may also teach graduate courses and do research.

Institution/ Degree Offerings	Less than 3 Credit Hours		3-5 Credit Hours		6-8 Credit Hours		9-11 Credit Hours		12 Credit Hours or More	
	No.	Percent	No.	Percent	No.	Percent	No.	Percent	No.	Percent
<b>Associate's and Bachelor's Degrees</b>										
Florida Hospital College of Hlth Sciences	1	3%	4	13%	19	61%	2	6%	5	16%
Florida College	0	0%	1	3%	3	10%	4	13%	22	73%
<b>Bachelor's Degrees</b>										
Bethune-Cookman College	0	0%	5	4%	14	10%	15	11%	104	75%
Clearwater Christian College	0	0%	0	0%	0	0%	0	0%	32	100%
Eckerd College	0	0%	9	11%	21	25%	39	46%	16	19%
Edward Waters College	0	0%	1	3%	6	16%	5	13%	26	68%
Flagler College	0	0%	0	0%	2	3%	6	10%	54	87%
Florida Memorial College	0	0%	0	0%	2	3%	8	10%	70	88%
Ringling School of Art & Design	1	2%	0	0%	2	4%	49	89%	3	5%
Southeastern College	0	0%	4	9%	5	12%	9	21%	25	58%
<b>Bachelor's &amp; Master's Degrees</b>										
Embry-Riddle Aeronautical University	0	0%	18	10%	38	22%	41	24%	76	44%
Florida Southern College	0	0%	4	4%	6	6%	18	17%	79	74%
International College	0	0%	3	8%	5	13%	1	3%	31	78%
Jacksonville University	2	2%	13	12%	20	19%	22	21%	50	47%
Rollins College	1	1%	3	2%	12	8%	8	5%	122	84%
Saint Leo University	0	0%	9	13%	9	13%	9	13%	40	60%
University of Tampa	4	3%	12	9%	28	20%	21	15%	75	54%
Warner Southern College	6	15%	1	2%	6	15%	3	7%	25	61%
Webber International University	0	0%	0	0%	0	0%	0	0%	16	100%
<b>Bachelor's, Master's, and Doctoral Degrees</b>										
Barry University	12	6%	31	15%	78	37%	52	24%	40	19%
Florida Institute of Technology	23	13%	57	31%	46	25%	36	20%	19	10%
Lynn University	0	0%	16	20%	14	18%	9	11%	40	51%
Nova Southeastern University	2	3%	1	1%	6	8%	8	10%	61	78%
Palm Beach Atlantic College	0	0%	2	2%	5	6%	9	10%	74	82%
Saint Thomas University	0	0%	3	7%	7	17%	5	12%	27	64%
Stetson University	0	0%	13	7%	52	28%	92	49%	30	16%
University of Miami	42	6%	126	18%	256	37%	121	18%	146	21%
<b>ICUF Totals</b>	<b>94</b>	<b>3%</b>	<b>336</b>	<b>11%</b>	<b>662</b>	<b>22%</b>	<b>592</b>	<b>20%</b>	<b>1308</b>	<b>44%</b>

Percentage of Undergraduate Course Sections Taught by Faculty in Fall 2001

P 62 percent of all undergraduate classes at ICUF institutions were taught by full-time faculty.

P 49 percent of all undergraduate classes were taught by ranked faculty (assistant, associate, and full professors).

P 28 percent of all undergraduate classes taught by full-time faculty were taught by full professors and associate professors at ICUF institutions.

P Approximately 45 percent of lower level undergraduate courses were taught by ranked faculty.

Institution	Full-Time Faculty				Total	Part-Time and Other Faculty	
	Full Professor	Associate Professor	Assistant Professor	Instructor/Lecturer		*Other Regular Faculty	**Supplemental Faculty
<b>Associate's and Bachelor's Degrees</b>							
Florida Hospital College of Hlth Sciences	12%	47%	9%	5%	73%	27%	0%
Florida College	Faculty are not ranked.				78%	NA	22%
<b>Bachelor's Degrees</b>							
Bethune-Cookman College	11%	11%	34%	23%	79%	0%	21%
Clearwater Christian College	33%	50%	5%	2%	90%	3%	7%
Eckerd College	26%	23%	29%	0%	78%	12%	11%
Edward Waters College	8%	14%	46%	8%	75%	0%	25%
Flagler College	12%	15%	32%	8%	66%	0%	34%
Florida Memorial College	7%	17%	35%	5%	64%	6%	30%
Ringling School of Art & Design	Faculty are not ranked.				68%	NA	32%
Southeastern College	28%	18%	31%	0%	77%	2%	20%
<b>Bachelor's &amp; Master's Degrees</b>							
Embry-Riddle Aeronautical University	21%	27%	20%	8%	76%	0%	24%
Florida Southern College	15%	15%	26%	3%	59%	8%	33%
International College	26%	25%	8%	7%	66%	0%	34%
Jacksonville University	23%	13%	23%	1%	59%	0%	41%
Rollins College	25%	16%	12%	0%	53%	7%	40%
Saint Leo University	3%	8%	5%	1%	17%	1%	83%
University of Tampa	19%	26%	13%	7%	64%	5%	31%
Warner Southern College	18%	15%	12%	16%	61%	0%	39%
Webber International University	7%	25%	39%	0%	70%	6%	24%
<b>Bachelor's, Master's, and Doctoral Degrees</b>							
Barry University	9%	16%	21%	4%	50%	0%	49%
Florida Institute of Technology	17%	31%	20%	11%	78%	3%	19%
Lynn University	11%	15%	14%	3%	43%	19%	37%
Nova Southeastern University	6%	13%	10%	4%	33%	4%	63%
Palm Beach Atlantic College	4%	14%	24%	3%	45%	9%	46%
Saint Thomas University	14%	17%	17%	5%	52%	0%	48%
Stetson University	28%	24%	18%	13%	82%	5%	13%
University of Miami	19%	17%	8%	37%	81%	5%	14%
<b>ICUF Totals</b>	<b>15%</b>	<b>17%</b>	<b>17%</b>	<b>10%</b>	<b>62%</b>	<b>4%</b>	<b>34%</b>

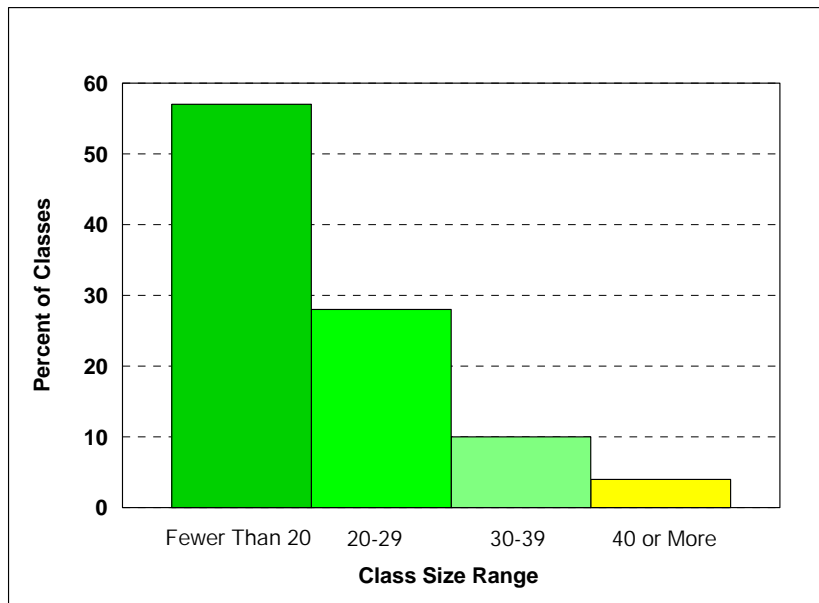
\*Other regular faculty include visiting faculty, emeriti, and others who have a recurring faculty contract, but are not ranked.



## Undergraduate Class Size



Figure 7  
Fall 2001 Size Distribution of Undergraduate Course Sections



One of the strengths and value-added benefits offered by ICUF institutions is small class sizes.

P 57 percent of all undergraduate classes offered at ICUF institutions had fewer than 20 students.

P 85 percent of all classes had fewer than 30 students and only four percent contained 40 or more students.

P The three largest lower level undergraduate sections among all ICUF institutions contained 245, 186, and 125 students, respectively. This is considerably smaller than the largest sections at SUS institutions.

P The single largest lower level undergraduate section at individual ICUF institutions ranged in size from 33-245 students. The median of the largest sections was 57 students. However, note that “large sections” represent a very small proportion of undergraduate classes at ICUF institutions.

Detailed data appear in the table that follows.

### Fall 2001 Size Distribution of Undergraduate Course Sections

<b>Institution</b>	<b>1-9 Students</b>	<b>10-19 Students</b>	<b>20-29 Students</b>	<b>30-39 Students</b>	<b>40-49 Students</b>	<b>50-99 Students</b>	<b>More than 99 Students</b>
<b>Associate's and Bachelor's Degrees</b>							
Florida Hospital College of Hlth Sciences	21%	29%	23%	13%	8%	6%	0%
Florida College	37%	28%	19%	6%	5%	6%	0%
<b>Bachelor's Degrees</b>							
Bethune-Cookman College	25%	28%	28%	16%	1%	1%	0%
Clearwater Christian College	39%	25%	16%	6%	5%	8%	1%
Eckerd College	17%	32%	38%	11%	2%	0%	0%
Edward Waters College	28%	15%	10%	40%	8%	0%	0%
Flagler College	12%	39%	36%	11%	1%	1%	0%
Florida Memorial College	21%	31%	30%	15%	2%	1%	0%
Ringling School of Art & Design	5%	49%	38%	3%	4%	1%	0%
Southeastern College	15%	28%	24%	11%	7%	15%	0%
<b>Bachelor's &amp; Master's Degrees</b>							
Embry-Riddle Aeronautical University	13%	16%	28%	34%	5%	3%	0%
Florida Southern College	33%	34%	20%	10%	2%	1%	0%
International College	37%	53%	8%	3%	0%	0%	0%
Jacksonville University	32%	38%	24%	5%	0%	0%	0%
Rollins College	12%	52%	34%	2%	0%	0%	0%
Saint Leo University	34%	40%	23%	2%	0%	0%	0%
University of Tampa	12%	41%	34%	10%	2%	2%	0%
Warner Southern College	34%	40%	22%	4%	0%	0%	0%
Webber International University	17%	36%	31%	17%	0%	0%	0%
<b>Bachelor's, Master's, and Doctoral Degrees</b>							
Barry University	27%	43%	26%	2%	1%	0%	0%
Florida Institute of Technology	4%	21%	42%	17%	10%	5%	1%
Lynn University	29%	27%	31%	11%	2%	1%	0%
Nova Southeastern University	15%	53%	27%	5%	0%	0%	0%
Palm Beach Atlantic College	28%	30%	30%	8%	2%	2%	0%
Saint Thomas University	14%	37%	36%	12%	1%	0%	0%
Stetson University	29%	33%	29%	7%	1%	0%	0%
University of Miami	18%	31%	26%	14%	5%	4%	1%
<b>ICUF Totals</b>	<b>22%</b>	<b>35%</b>	<b>28%</b>	<b>10%</b>	<b>2%</b>	<b>2%</b>	<b>&lt;1%</b>

Data exclude independent/directed studies, supervised research, internships, performance instruction and other individual instruction.

Fall 2001 Mean Undergraduate Course Section Size

- P The mean undergraduate section size across all ICUF institutions was 19 students.
- P The mean undergraduate section size for individual ICUF institutions ranged from 14 to 28.

Institution	Total Students All Sections	Total Sections	Mean Section Size
<b>Associate's and Bachelor's Degrees</b>			
Florida Hospital College of Hlth Sciences	2,606	112	23
Florida College	3,380	199	17
<b>Bachelor's Degrees</b>			
Bethune-Cookman College	12,770	714	18
Clearwater Christian College	3,837	179	21
Eckerd College	5,826	300	19
Edward Waters College	4,529	213	21
Flagler College	9,321	454	21
Florida Memorial College	9,519	487	20
Ringling School of Art & Design	4,864	252	19
Southeastern College	6,631	243	27
<b>Bachelor's &amp; Master's Degrees</b>			
Embry-Riddle Aeronautical University	20,396	799	26
Florida Southern College	8,960	554	16
International College	2,747	200	14
Jacksonville University	9,615	645	15
Rollins College	9,743	582	17
Saint Leo University	20,792	1,519	14
University of Tampa	15,970	810	20
Warner Southern College	4,888	345	14
Webber International University	1,920	101	19
<b>Bachelor's, Master's, and Doctoral Degrees</b>			
Barry University	14,344	873	16
Florida Institute of Technology	13,220	464	28
Lynn University	8,838	511	17
Nova Southeastern University	13,481	776	17
Palm Beach Atlantic College	12,576	716	18
Saint Thomas University	5,250	269	20
Stetson University	9,233	568	16
University of Miami	44,025	1,819	24
<b>ICUF Totals</b>	<b>279,281</b>	<b>14,704</b>	<b>19</b>



Completion of the Bachelor's Degree



Comparison of Actual Credit Hours Accrued at Graduation  
Versus the Number Required for a Bachelor's Degree

P Data are for the first-time in college full-time freshmen cohort entering in Fall 1995.

P As a group, ICUF institutions graduated students efficiently without a lot of extra credits in excess of the minimum required for graduation.

P On average, students graduated with only eight credits (range 1-14 credits) in excess of the mean number needed to complete requirements.

P Analysis of the student population that graduated within six years after entry revealed that students graduated in a mean of 4.2 years. The range of mean years to graduate was 3.3 to 6.0 years.

Institution/ Degree Offerings	Mean Credit Hours		Fall 1995 First-Time in College Full-Time Freshmen		
	Required to Graduate Per Catalog	Actually Accrued at Graduation	No. in Cohort at Entry	No. of Students Graduated in 6 Years	Mean Years to Graduate
<b>Associate's and Bachelor's Degrees</b>					
Florida Hospital College of Hlth Sciences	Not Applicable	----	NA	0	----
Florida College	124	138	6	6	4.0
<b>Bachelor's Degrees</b>					
Bethune-Cookman College	130	142	729	242	4.7
Clearwater Christian College	128	137	145	62	4.1
Eckerd College	126	134	334	222	4.5
Edward Waters College	120	128	103	24	4.3
Flagler College	120	126	355	187	4.0
Florida Memorial College	126	138	336	64	4.1
Ringling School of Art & Design	124	125	143	84	6.0
Southeastern College	134	140	185	58	4.9
<b>Bachelor's &amp; Master's Degrees</b>					
Embry-Riddle Aeronautical University	124	135	637	307	4.7
Florida Southern College	124	131	527	285	4.1
International College	Data not available	----	Data not available	0	----
Jacksonville University	128	138	356	159	4.2
Rollins College	117	125	412	270	4.0
Saint Leo University	122	127	176	60	4.4
University of Tampa	124	129	294	147	4.1
Warner Southern College	128	130	63	15	3.3
Webber International University	120	126	109	38	4.2
<b>Bachelor's, Master's, and Doctoral Degrees</b>					
Barry University	120	128	177	85	5.0
Florida Institute of Technology	130	135	371	192	4.5
Lynn University	120	127	284	109	4.2
Nova Southeastern University	120	126	141	64	3.8
Palm Beach Atlantic College	128	134	329	113	4.2
Saint Thomas University	122	127	73	23	4.0
Stetson University	120	127	464	275	4.1
University of Miami	122	133	1684	1,066	3.9
<b>*ICUF Mean</b>	<b>124</b>	<b>132</b>	<b>8,433</b>	<b>4,157</b>	<b>4.2</b>

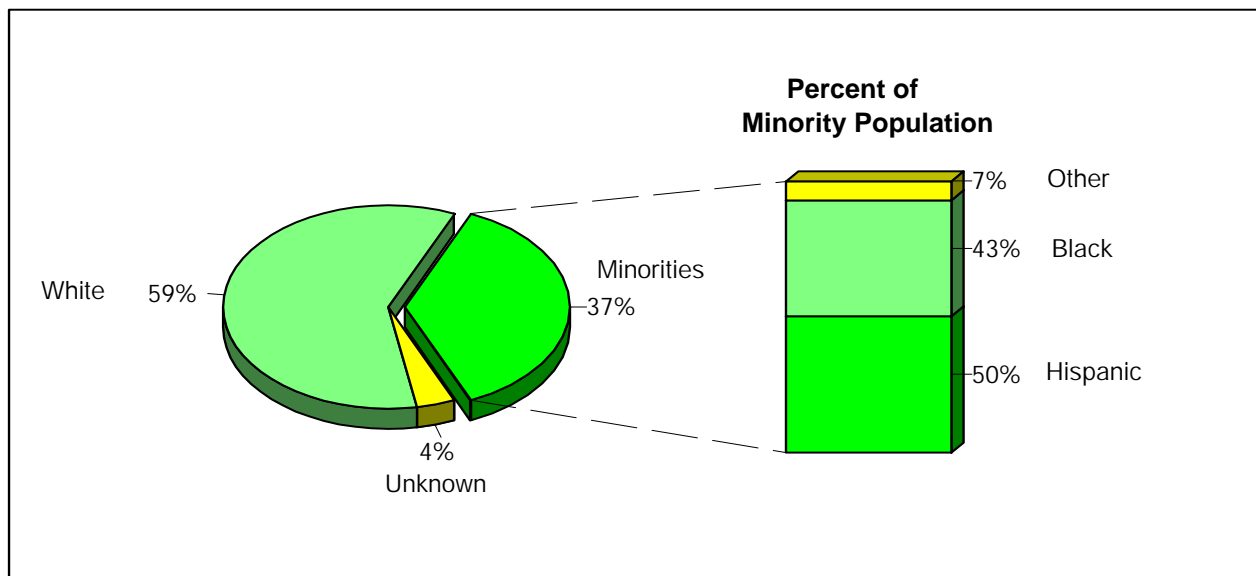
Florida Hospital College did not begin a bachelor's program until January 1998.

International College was not established until 1990.

\*Values represent means weighted by the number of students that graduated from each institution.

**Figure 8**

Racial/Ethnic Distribution of Florida Resident Bachelor's Degree Recipients  
Graduating During the Period July 1, 2000-June 30, 2001



P ICUF institutions awarded a total of 12,696 bachelor's degrees during the period July 1, 2000 through June 30, 2001.

P Overall, 37 percent of Florida resident bachelor's degree recipients at ICUF institutions were from racial/ethnic minorities. Approximately 30 percent of the students graduating with a bachelor's degree from SUS institutions were from minorities (*Fact Book 2000-2001* of the State University System of Florida).

P At ICUF institutions, 63 percent of graduates were women, and 37 percent were men. Graduates at SUS institutions included 57 percent women and 43 percent men.

P As a group, doctoral institutions awarded the highest proportion of bachelor's degrees to Florida resident minority graduates (49 percent).

Detailed data appear in the table that follows.

Racial/Ethnic Distribution of Florida Resident Bachelor's Degree Recipients  
Graduating During the Period July 1, 2000-June 30, 2001

Institution	Total Bachelor's	Total Minorities		White		Black		Hispanic		*Other Minority		Race/Ethnicity Unknown	
		No.	Percent	No.	Percent	No.	Percent	No.	Percent	No.	Percent	No.	Percent
<b>Associate's and Bachelor's Degrees</b>													
Florida Hospital College of Hlth Sciences	0	---	---	---	---	---	---	---	---	---	---	---	---
Florida College	7	2	29%	5	71%	0	0%	2	29%	0	0%	0	0%
<b>Bachelor's Degrees</b>													
Bethune-Cookman College	134	131	98%	1	1%	129	96%	1	1%	1	<1%	2	1%
Clearwater Christian College	72	4	6%	68	94%	3	4%	1	1%	0	0%	0	0%
Eckerd College	137	12	9%	124	91%	4	3%	8	6%	0	0%	1	1%
Edward Waters College	84	84	100%	0	0%	84	100%	0	0%	0	0%	0	0%
Flagler College	214	12	6%	202	94%	3	1%	8	4%	1	<1%	0	0%
Florida Memorial College	143	141	99%	2	1%	130	91%	11	8%	0	0%	0	0%
Ringling School of Art & Design	104	17	16%	87	84%	2	2%	8	8%	7	7%	0	0%
Southeastern College	100	15	15%	85	85%	5	5%	9	9%	1	1%	0	0%
<b>Bachelor's &amp; Master's Degrees</b>													
Embry-Riddle Aeronautical University	235	29	12%	189	80%	5	2%	16	7%	8	3%	17	7%
Florida Southern College	406	54	13%	339	83%	36	9%	15	4%	3	1%	13	3%
International College	208	31	15%	177	85%	19	9%	7	3%	5	2%	0	0%
Jacksonville University	287	66	23%	204	71%	42	15%	8	3%	16	6%	17	6%
Rollins College	424	72	17%	335	79%	26	6%	35	8%	11	3%	17	4%
Saint Leo University	790	167	21%	556	70%	101	13%	48	6%	18	2%	67	8%
University of Tampa	315	63	20%	234	74%	20	6%	39	12%	4	1%	18	6%
Warner Southern College	203	37	18%	165	81%	28	14%	8	4%	1	<1%	1	<1%
Webber International University	59	9	15%	50	85%	6	10%	3	5%	0	0%	0	0%
<b>Bachelor's, Master's, and Doctoral Degrees</b>													
Barry University	1121	630	56%	410	37%	196	17%	421	38%	13	1%	81	7%
Florida Institute of Technology	196	28	14%	162	83%	7	4%	15	8%	6	3%	6	3%
Lynn University	149	41	28%	82	55%	23	15%	17	11%	1	1%	26	17%
Nova Southeastern University	954	445	47%	482	51%	183	19%	223	23%	39	4%	27	3%
Palm Beach Atlantic College	244	59	24%	181	74%	40	16%	16	7%	3	1%	4	2%
Saint Thomas University	177	154	87%	23	13%	46	26%	106	60%	2	1%	0	0%
Stetson University	313	35	11%	277	88%	12	4%	16	5%	7	2%	1	<1%
University of Miami	1004	657	65%	341	34%	129	13%	465	46%	63	6%	6	1%
<b>ICUF Totals</b>	<b>8,080</b>	<b>2,995</b>	<b>37%</b>	<b>4,781</b>	<b>59%</b>	<b>1,279</b>	<b>16%</b>	<b>1,506</b>	<b>19%</b>	<b>210</b>	<b>3%</b>	<b>304</b>	<b>4%</b>

Florida College did not begin a bachelor's degree program until Fall 1993. Florida Hospital College did not begin a bachelor's program until January 1998.

\*Other minority includes American Indian/Alaska Native, and Asian/Pacific Islanders.

Racial/Ethnic Distribution of All Bachelor's Degree Recipients  
Graduating During the Period July 1, 2000-June 30, 2001

Institution	Total Bachelor's	Total Minorities		White		Black		Hispanic		*Other Minority		Nonresident Alien		Race/Ethnicity Unknown	
		No.	Percent	No.	Percent	No.	Percent	No.	Percent	No.	Percent	No.	Percent	No.	Percent
<b>Associate's and Bachelor's Degrees</b>															
Florida Hospital College of Hlth Sciences	17	4	24%	12	71%	3	18%	1	6%	0	0%	1	6%	0	0%
Florida College	8	1	13%	6	75%	0	0%	1	13%	0	0%	1	13%	0	0%
<b>Bachelor's Degrees</b>															
Bethune-Cookman College	206	171	83%	1	<1%	169	82%	1	<1%	1	<1%	31	15%	3	1%
Clearwater Christian College	116	6	5%	110	95%	5	4%	1	1%	0	0%	0	0%	0	0%
Eckerd College	314	17	5%	253	81%	5	2%	11	4%	1	<1%	39	12%	5	2%
Edward Waters College	130	130	100%	0	0%	129	99%	0	0%	1	1%	0	0%	0	0%
Flagler College	361	17	5%	335	93%	4	1%	10	3%	3	1%	9	2%	0	0%
Florida Memorial College	200	183	92%	2	1%	171	86%	12	6%	0	0%	15	8%	0	0%
Ringling School of Art & Design	198	25	13%	164	83%	2	1%	12	6%	11	6%	8	4%	1	1%
Southeastern College	215	25	12%	189	88%	6	3%	13	6%	6	3%	1	<1%	0	0%
<b>Bachelor's &amp; Master's Degrees</b>															
Embry-Riddle Aeronautical University	737	78	11%	498	68%	25	3%	28	4%	25	3%	128	17%	33	4%
Florida Southern College	507	63	12%	407	80%	41	8%	19	4%	3	1%	24	5%	13	3%
International College	208	31	15%	177	85%	19	9%	7	3%	5	2%	0	0%	0	0%
Jacksonville University	378	82	22%	261	69%	50	13%	12	3%	20	5%	15	4%	20	5%
Rollins College	570	87	15%	442	78%	30	5%	42	7%	15	3%	22	4%	19	3%
Saint Leo University	1,765	582	33%	1010	57%	453	26%	90	5%	39	2%	10	1%	163	9%
University of Tampa	520	93	18%	343	66%	34	7%	53	10%	6	1%	43	8%	41	8%
Warner Southern College	339	66	19%	268	79%	45	13%	19	6%	2	1%	2	1%	3	1%
Webber International University	97	12	12%	64	66%	9	9%	3	3%	0	0%	21	22%	0	0%
<b>Bachelor's, Master's, and Doctoral Degrees</b>															
Barry University	1,266	649	51%	451	36%	204	16%	431	34%	14	1%	81	6%	85	7%
Florida Institute of Technology	391	37	9%	215	55%	11	3%	17	4%	9	2%	130	33%	9	2%
Lynn University	308	51	17%	158	51%	23	7%	24	8%	4	1%	58	19%	41	13%
Nova Southeastern University	1,088	464	43%	512	47%	208	19%	216	20%	40	4%	80	7%	32	3%
Palm Beach Atlantic College	338	74	22%	240	71%	48	14%	22	7%	4	1%	18	5%	6	2%
Saint Thomas University	233	159	68%	26	11%	47	20%	110	47%	2	1%	46	20%	2	1%
Stetson University	436	40	9%	366	84%	15	3%	17	4%	8	2%	28	6%	2	<1%
University of Miami	1,750	807	46%	764	44%	192	11%	532	30%	83	5%	171	10%	8	<1%
<b>ICUF Totals</b>	<b>12,696</b>	<b>3,954</b>	<b>31%</b>	<b>7,274</b>	<b>57%</b>	<b>1,948</b>	<b>15%</b>	<b>1,704</b>	<b>13%</b>	<b>302</b>	<b>2%</b>	<b>982</b>	<b>8%</b>	<b>486</b>	<b>4%</b>

Florida College did not begin a bachelor's degree program until Fall 1993. Florida Hospital College did not begin a bachelor's program until January 1998.

\*Other minority includes American Indian/Alaska Native, and Asian/Pacific Islanders.

## Racial/Ethnic Distribution of Florida Resident Undergraduates Pursuing a Degree in Education in Fall 2001

P Twenty-one out of 27 ICUF institutions offer an undergraduate degree in education. Approximately 4,500 students were pursuing a bachelor's degree in education at ICUF institutions. This represents 24 percent of all students pursuing an education degree in the ICUF and the SUS combined.

P More than half of the students pursuing a bachelor's degree in education are from racial/ethnic minorities; more than half of minorities are black.

P 83 percent of the education majors were women.

Institution	Total Undergraduates	Total Minorities		White		Black		Hispanic		*Other Minority		Racial/Ethnic Unknown	
		No.	Percent	No.	Percent	No.	Percent	No.	Percent	No.	Percent	No.	Percent
<b>Associate's and Bachelor's Degrees</b>													
Florida Hospital College of Hlth Sciences	Not applicable												
Florida College	25	2	8%	23	92%	1	4%	1	4%	0	0%	0	0%
<b>Bachelor's Degrees</b>													
Bethune-Cookman College	384	372	97%	6	2%	366	95%	6	2%	0	0%	6	2%
Clearwater Christian College	59	3	5%	55	93%	1	2%	2	3%	0	0%	1	2%
Eckerd College	Not applicable												
Edward Waters College	148	148	100%	0	0%	148	100%	0	0%	0	0%	0	0%
Flagler College	225	15	7%	207	92%	3	1%	9	4%	3	1%	3	1%
Florida Memorial College	445	441	99%	4	1%	421	95%	20	4%	0	0%	0	0%
Ringling School of Art & Design	Not applicable												
Southeastern College	184	38	21%	126	68%	8	4%	28	15%	2	1%	20	11%
<b>Bachelor's &amp; Master's Degrees</b>													
Embry-Riddle Aeronautical University	Not applicable												
Florida Southern College	222	23	10%	184	83%	16	7%	6	3%	1	<1%	15	7%
International College	Not applicable												
Jacksonville University	44	3	7%	33	75%	3	7%	0	0%	0	0%	8	18%
Rollins College	68	13	19%	50	74%	1	1%	11	16%	1	1%	5	7%
Saint Leo University	502	55	11%	430	86%	30	6%	17	3%	8	2%	17	3%
University of Tampa	95	15	16%	68	72%	7	7%	7	7%	1	1%	12	13%
Wamer Southern College	146	29	20%	115	79%	19	13%	9	6%	1	1%	2	1%
Webber International University	Not applicable												
<b>Bachelor's, Master's, and Doctoral Degrees</b>													
Barry University	646	424	66%	134	21%	98	15%	325	50%	1	<1%	88	14%
Florida Institute of Technology	7	1	14%	6	86%	1	14%	0	0%	0	0%	0	0%
Lynn University	26	9	35%	15	58%	4	15%	5	19%	0	0%	2	8%
Nova Southeastern University	706	467	66%	222	31%	210	30%	252	36%	5	1%	17	2%
Palm Beach Atlantic College	202	31	15%	169	84%	12	6%	17	8%	2	1%	2	1%
Saint Thomas University	108	99	92%	9	8%	24	22%	75	69%	0	0%	0	0%
Stetson University	151	13	9%	135	89%	4	3%	7	5%	2	1%	3	2%
University of Miami	98	67	68%	27	28%	11	11%	54	55%	2	2%	4	4%
<b>ICUF Total</b>	<b>4,491</b>	<b>2,268</b>	<b>51%</b>	<b>2,018</b>	<b>45%</b>	<b>1,388</b>	<b>31%</b>	<b>851</b>	<b>19%</b>	<b>29</b>	<b>1%</b>	<b>205</b>	<b>5%</b>

\*Other minority includes American Indian/Alaska Native, and Asian/Pacific Islanders.

Racial/Ethnic Distribution of Florida Residents Awarded a Bachelor's Degree in Education  
Graduating During the Period July 1, 2000-June 30, 2001

P Bachelor's degrees in education awarded by ICUF institutions represented 37 percent of all such degrees awarded by ICUF and the SUS combined.

P 50 percent of the bachelor's degrees in education were awarded to students from racial/ethnic minorities; more than half of minorities were black.

P 81 percent of the education degrees were awarded to women by ICUF and SUS institutions.

Institution	Total Bachelor's	Total Minorities		White		Black		Hispanic		*Other Minority		Race/Ethnicity Unknown	
		No.	Percent	No.	Percent	No.	Percent	No.	Percent	No.	Percent	No.	Percent
<b>Associate's and Bachelor's Degrees</b>													
Florida Hospital College of Hlth Sciences	NA	---	---	---	---	---	---	---	---	---	---	---	---
Florida College	5	2	40%	3	60%	0	0%	2	40%	0	0%	0	0%
<b>Bachelor's Degrees</b>													
Bethune-Cookman College	40	39	98%	0	0%	39	98%	0	0%	0	0%	1	3%
Clearwater Christian College	19	1	5%	18	95%	1	5%	0	0%	0	0%	0	0%
Eckerd College	NA	---	---	---	---	---	---	---	---	---	---	---	---
Edward Waters College	148	148	100%	0	0%	148	100%	0	0%	0	0%	0	0%
Flagler College	46	1	2%	45	98%	0	0%	1	2%	0	0%	0	0%
Florida Memorial College	37	37	100%	0	0%	32	86%	5	14%	0	0%	0	0%
Ringling School of Art & Design	NA	---	---	---	---	---	---	---	---	---	---	---	---
Southeastern College	38	8	21%	30	79%	2	5%	5	13%	1	3%	0	0%
<b>Bachelor's &amp; Master's Degrees</b>													
Embry-Riddle Aeronautical University	NA	---	---	---	---	---	---	---	---	---	---	---	---
Florida Southern College	56	4	7%	51	91%	2	4%	2	4%	0	0%	1	2%
International College	NA	---	---	---	---	---	---	---	---	---	---	---	---
Jacksonville University	15	4	27%	9	60%	3	20%	1	7%	0	0%	2	13%
Rollins College	34	5	15%	29	85%	3	9%	2	6%	0	0%	0	0%
Saint Leo University	171	25	15%	140	82%	14	8%	7	4%	4	2%	6	4%
University of Tampa	30	5	17%	22	73%	1	3%	4	13%	0	0%	3	10%
Warner Southern College	16	2	13%	14	88%	0	0%	2	13%	0	0%	0	0%
Webber International University	NA	---	---	---	---	---	---	---	---	---	---	---	---
<b>Bachelor's, Master's, and Doctoral Degrees</b>													
Barry University	238	159	67%	60	25%	34	14%	125	53%	0	0%	19	8%
Florida Institute of Technology	6	0	0%	6	100%	0	0%	0	0%	0	0%	0	0%
Lynn University	10	1	10%	7	70%	1	10%	0	0%	0	0%	2	20%
Nova Southeastern University	280	167	60%	104	37%	74	26%	89	32%	4	1%	9	3%
Palm Beach Atlantic College	30	1	3%	29	97%	0	0%	1	3%	0	0%	0	0%
Saint Thomas University	15	14	93%	1	7%	2	13%	12	80%	0	0%	0	0%
Stetson University	29	1	3%	28	97%	0	0%	1	3%	0	0%	0	0%
University of Miami	28	21	75%	7	25%	0	0%	21	75%	0	0%	0	0%
<b>ICUF Totals</b>	<b>1,291</b>	<b>645</b>	<b>50%</b>	<b>603</b>	<b>47%</b>	<b>356</b>	<b>28%</b>	<b>280</b>	<b>22%</b>	<b>9</b>	<b>1%</b>	<b>43</b>	<b>3%</b>

Florida College did not begin a bachelor's degree program until Fall 1993. Florida Hospital College did not begin a bachelor's program until January 1998.

\*Other minority includes American Indian/Alaska Native, and Asian/Pacific Islanders.

## Graduation and Persistence Rates for First-Time in College Full-Time Freshmen

The two tables that follow describe the racial/ethnic composition and rates of graduation and persistence for cohorts of first-time in college full-time freshmen that entered college in the fall 1995. Selection of students to be included in the cohorts followed the selection criteria prescribed by federal regulations for implementation of the Student Right-to-Know Act (Public Law 101-542).

It is difficult to make valid comparisons of the graduation rates of individual institutions. In order to do so, one must be able to identify institutions with very similar institutional and student characteristics. The ICUF member institutions and the SUS institutions vary considerably in their missions, the types of students served, racial/ethnic diversity, selectivity (i.e., admissions standards and requirements), the availability of remedial and/or academic support services, etc. Therefore, the reader should be cautious in attempting to evaluate the performance of a particular institution, or to compare institutions without this essential contextual information. The term “private” (independent) college or university sometimes elicits in the public visions of elite universities, such as Harvard, Yale, Princeton, etc. It is sometimes assumed that all or most “private” institutions are highly selective, elite institutions. In fact, the highly selective institutions are only a small percentage of the independent institutions nationally.

Generally speaking, institutions with the highest or most selective admissions standards/requirements will have the highest rates of graduation. For example, students with high SAT scores and GPAs usually are the best prepared to attend college and succeed. Therefore, a college that admits primarily high achieving students will likely have high rates of graduation.

In contrast, institutions with more liberal admissions criteria place the emphasis on access and opportunity, and tend to have lower rates of graduation compared to their more selective counterparts. Typically, entering students with lower levels of achievement in high school require a lot of academic support services to succeed in college.

Aggregate rates of graduation and retention for ICUF institutions were compared with SUS institutions, using data from the 2000-2001 Fact Book of the State University System of Florida. Data at the *sector-level* may to some extent normalize for variance among individual institutions due to differences in student and institutional characteristics described above.

As noted in the table, ICUF institutions as a group had a six-year graduation rate of 49 percent versus a six-year rate for the SUS of 58 percent. As a group, the minimum requirements for admission concerning high school GPA and SAT scores are higher for the SUS than they are for ICUF institutions as a whole.

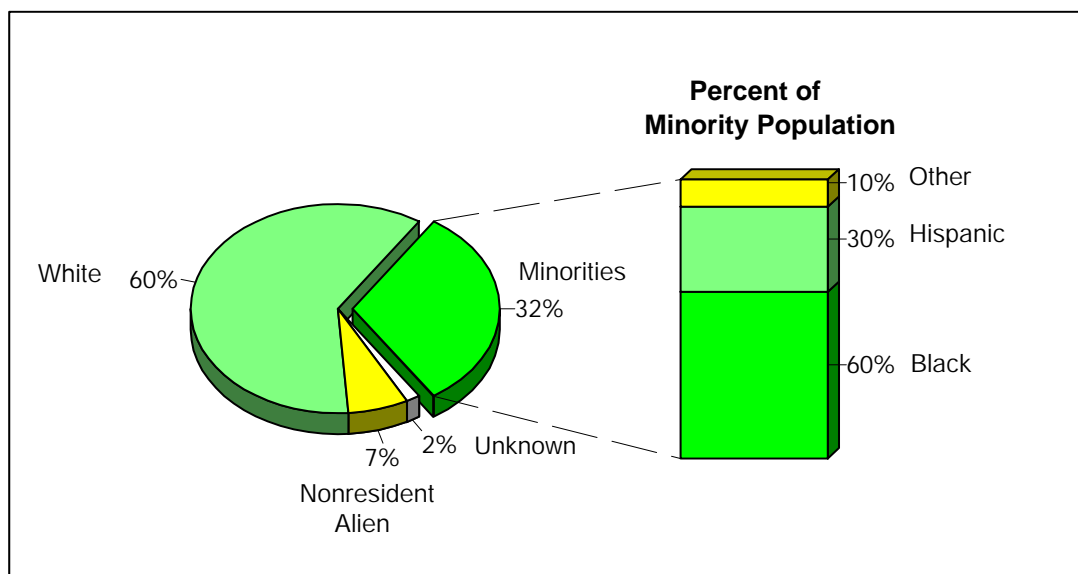
Data concerning the proportion of freshmen that were first-time in college students was included to illustrate that graduation rates for first-time in college freshmen generally do not represent the overall productivity of an institution's undergraduate programs. First-time in college full-time freshmen represented only 55 percent of all freshmen at ICUF institutions; therefore, their rates of

completion are not a good measure of the rate of graduation of undergraduates in general. Moreover, rates of graduation of small circumscribed cohorts of undergraduates might suggest that ICUF institutions produce small numbers of bachelor's degree recipients. In fact, overall productivity on an annual basis is quite substantial. As an example, approximately 63 bachelor's degrees were awarded by Warner Southern College to members of the fall 1995 cohort of first-time in college full-time freshmen so far, but the university awards approximately 339 bachelor's degrees annually. Therefore, the total number of bachelor's degrees awarded during a 12-month period is a more comprehensive measure of productivity. These data are shown on pages 36 and 44.

Finally, six-year graduation rates are not final or ultimate rates for institutions with members of the cohort still enrolled. Thus, the completion rate will continue to increase until all students in the cohort have graduated or left the institution.

Figure 9

Racial/Ethnic Distribution of First-Time in College Freshmen Entering in Fall 1995.



P In the aggregate, the fall 1995 cohort of first-time in college full-time freshmen at ICUF institutions included 32 percent of freshmen from minorities. In comparison, 40 percent of full-time lower level undergraduates enrolled in fall 1995 at SUS institutions were from minorities.

P Black students were the predominant minority group served by both ICUF and SUS institutions in 1995.

P The ICUF group includes four institutions where the majority of first-time in college full-time freshmen were from racial/ethnic minority groups: Bethune-Cookman College, Edward Waters College, Florida Memorial College, and St. Thomas University. The SUS has two, Florida A & M and Florida International University.

Detailed data appear on the table that follows.

Racial/Ethnic Distribution  
of First-Time in College Full-Time Freshmen Entering in Fall 1995

Institution	Original Cohort	Total Minorities		White		Black		Hispanic		*Other Minority		Nonresident Alien		Racial/Ethnic Unknown	
		No.	Percent	No.	Percent	No.	Percent	No.	Percent	No.	Percent	No.	Percent	No.	Percent
<b>Associate's and Bachelor's Degrees</b>															
Florida Hospital College of Hlth Sciences	NA														
Florida College	6	1	17%	5	83%	1	17%	0	0%	0	0%	0	0%	0	0%
<b>Bachelor's Degrees</b>															
Bethune-Cookman College	729	700	96%	1	<1%	693	95%	6	1%	1	<1%	20	3%	8	1%
Clearwater Christian College	145	16	11%	129	89%	8	6%	4	3%	4	3%	0	0%	0	0%
Eckerd College	334	30	9%	278	83%	10	3%	10	3%	10	3%	24	7%	2	1%
Edward Waters College	103	101	98%	0	0%	101	98%	0	0%	0	0%	2	2%	0	0%
Flagler College	355	17	5%	334	94%	4	1%	8	2%	5	1%	4	1%	0	0%
Florida Memorial College	336	315	94%	1	<1%	307	91%	8	2%	0	0%	20	6%	0	0%
Ringling School of Art & Design	143	17	12%	119	83%	3	2%	7	5%	7	5%	7	5%	0	0%
Southeastern College	185	23	12%	161	87%	9	5%	12	6%	2	1%	1	1%	0	0%
<b>Bachelor's &amp; Master's Degrees</b>															
Embry-Riddle Aeronautical University	637	86	14%	481	76%	21	3%	40	6%	25	4%	60	9%	10	2%
Florida Southern College	527	73	14%	429	81%	32	6%	31	6%	10	2%	13	2%	12	2%
International College	Data not available														
Jacksonville University	356	51	14%	267	75%	25	7%	13	4%	13	4%	17	5%	21	6%
Rollins College	412	61	15%	331	80%	11	3%	32	8%	18	4%	20	5%	0	0%
Saint Leo University	176	37	21%	129	73%	9	5%	28	16%	0	0%	5	3%	5	3%
University of Tampa	294	52	18%	174	59%	21	7%	27	9%	4	1%	36	12%	32	11%
Warner Southern College	63	12	19%	49	78%	6	10%	6	10%	0	0%	2	3%	0	0%
Webber International University	109	13	12%	67	61%	12	11%	1	1%	0	0%	29	27%	0	0%
<b>Bachelor's, Master's, and Doctoral Degrees</b>															
Barry University	177	77	44%	71	40%	28	16%	44	25%	5	3%	29	16%	0	0%
Florida Institute of Technology	371	58	16%	238	64%	22	6%	25	7%	11	3%	65	18%	10	3%
Lynn University	284	26	9%	189	67%	11	4%	15	5%	0	0%	41	14%	28	10%
Nova Southeastern University	141	38	27%	91	65%	13	9%	22	16%	3	2%	12	9%	0	0%
Palm Beach Atlantic College	329	50	15%	258	78%	17	5%	24	7%	9	3%	21	6%	0	0%
Saint Thomas University	73	49	67%	16	22%	24	33%	24	33%	1	1%	6	8%	2	3%
Stetson University	464	53	11%	397	86%	13	3%	30	6%	10	2%	14	3%	0	0%
University of Miami	1,684	704	42%	871	52%	188	11%	394	23%	122	7%	108	6%	1	<1%
<b>ICUF Totals</b>	<b>8,433</b>	<b>2,660</b>	<b>32%</b>	<b>5,086</b>	<b>60%</b>	<b>1,589</b>	<b>19%</b>	<b>811</b>	<b>10%</b>	<b>260</b>	<b>3%</b>	<b>556</b>	<b>7%</b>	<b>131</b>	<b>2%</b>

Florida Hospital College did not begin a bachelor's program until January 1998.

\*Other minority includes American Indian/Alaska Native, and Asian/Pacific Islanders.

Six-Year Graduation and Persistence Rates  
For First-Time in College Full-Time Freshmen Entering in Fall 1995

P The aggregate six-year graduation rate for ICUF institutions was 49 percent versus the six-year aggregate graduation rate of 58 percent for the SUS.

P Ten ICUF institutions had graduation rates greater than or equal to 50 percent. Only two SUS institutions had six- year graduation rates greater than 50 percent.

P Overall, 51 percent of first-time in college freshmen at ICUF institutions had graduated or were still enrolled six years after entry.

P In the aggregate, 55 percent of all fall 1995 freshmen at ICUF institutions were first-time in college full-time freshmen. At eight institutions, more than two-thirds of all freshmen were first-time in college full-time freshmen. Another four institutions reported that less than one-third of all freshmen were first-time in college full-time freshmen.

Institution	First-Time in College Full-Time Entering Freshmen				
	Number in Cohort at Entry	*Percent of All Freshmen	Percent Six Years after Entry		
			**Graduated	Still Enrolled	Still Enrolled + Graduated
<b>Associate's and Bachelor's Degrees</b>					
Florida Hospital College of Hlth Sciences	NA				
Florida College	6	3%	100%	0%	100%
<b>Bachelor's Degrees</b>					
Bethune-Cookman College	729	58%	33%	7%	40%
Clearwater Christian College	145	78%	43%	1%	43%
Eckerd College	334	100%	66%	0%	66%
Edward Waters College	103	44%	23%	0%	23%
Flagler College	355	59%	53%	1%	54%
Florida Memorial College	336	89%	19%	7%	26%
Ringling School of Art & Design	143	59%	59%	0%	59%
Southeastern College	185	39%	31%	3%	34%
<b>Bachelor's &amp; Master's Degrees</b>					
Embry-Riddle Aeronautical University	637	62%	48%	4%	52%
Florida Southern College	527	100%	54%	0%	54%
International College	Data not available				
Jacksonville University	356	73%	45%	2%	47%
Rollins College	412	42%	66%	0%	66%
Saint Leo University	176	16%	34%	1%	35%
University of Tampa	294	37%	50%	0%	50%
Warner Southern College	63	59%	24%	2%	21%
Webber International University	109	66%	35%	0%	35%
<b>Bachelor's, Master's, and Doctoral Degrees</b>					
Barry University	177	15%	48%	3%	51%
Florida Institute of Technology	371	65%	52%	0%	52%
Lynn University	284	49%	38%	0%	39%
Nova Southeastern University	141	25%	45%	2%	48%
Palm Beach Atlantic College	329	100%	34%	3%	37%
Saint Thomas University	73	33%	32%	3%	34%
Stetson University	464	84%	59%	0%	59%
University of Miami	1,684	76%	63%	1%	64%
<b>ICUF Totals</b>	<b>8,433</b>	<b>55%</b>	<b>49%</b>	<b>2%</b>	<b>51%</b>

Florida Hospital College did not begin a bachelor's program until January 1998.

\*Data from IPEDS Fall 1995 Enrollment Surveys.

Associate of Arts Transfer Students from Florida Community Colleges  
Three-Year Graduation Rates from ICUF Institutions

P Nearly 100% of AA degree transfer students from Florida Community Colleges were admitted into the program of their choice at ICUF institutions, thus providing access to programs either not available, or with limited access (space) at Florida public universities.

P The ICUF aggregate three-year graduation rates for the 1996, 1997, and 1998 cohorts of full-time AA degree transfer students were 71 percent, 68 percent, and 70 percent respectively. This compares favorably with three-year graduation rates of 59 percent for AA degree transfer students entering the SUS.

P Three-year graduation rates for AA degree transfer students entering in fall 1998 ranged from 41 percent to 100% for individual ICUF institutions; 16 of 20 reporting institutions had rates greater than or equal to 60%. Completion rates for AA transfer students at SUS institutions ranged from 43 percent to 71 percent and only three had rates greater than or equal to 60%.

Institution	Fall 1996 AA Transfer Cohort			Fall 1997 AA Transfer Cohort			Fall 1998 AA Transfer Cohort		
	No. of Transfers	Graduated in Three Years		No. of Transfers	Graduated in Three Years		No. of Transfers	Graduated in Three Years	
		No.	Percent		No.	Percent		No.	Percent
<b>Associate's and Bachelor's Degrees</b>									
Florida Hospital College of Hlth Sciences	NA			NA			NA		
Florida College	NA			NA			NA		
<b>Bachelor's Degrees</b>									
Bethune-Cookman College	11	8	73%	7	6	86%	7	6	86%
Clearwater Christian College	NA			NA			NA		
Eckerd College	18	10	56%	18	18	100%	13	10	77%
Edward Waters College	Data not available			28	5	18%	39	21	54%
Flagler College	20	16	80%	18	17	94%	22	17	77%
Florida Memorial College	73	41	56%	52	29	56%	51	30	59%
Ringling School of Art & Design	4	4	100%	12	3	25%	8	8	100%
Southeastern College	0	0	0%	2	2	100%	2	2	100%
<b>Bachelor's &amp; Master's Degrees</b>									
Embry-Riddle Aeronautical University	Data not available			Data not available			Data not available		
Florida Southern College	39	22	56%	45	33	73%	43	28	65%
International College	NA			NA			NA		
Jacksonville University	NA			10	8	80%	25	20	80%
Rollins College	50	41	82%	72	58	81%	76	51	67%
Saint Leo University	91	74	81%	108	70	65%	265	168	63%
University of Tampa	37	28	76%	56	33	59%	60	41	68%
Warner Southern College	112	102	91%	81	76	94%	72	61	85%
Webber International University	10	6	60%	4	4	100%	9	9	100%
<b>Bachelor's, Master's, and Doctoral Degrees</b>									
Barry University	71	31	44%	53	15	28%	149	129	87%
Florida Institute of Technology	53	31	58%	11	8	73%	20	14	70%
Lynn University	5	4	80%	Data not available			Data not available		
Nova Southeastern University	65	54	83%	77	62	81%	Data not available		
Palm Beach Atlantic College	Data not available			Data not available			Data not available		
Saint Thomas University	36	20	56%	32	26	81%	37	15	41%
Stetson University	30	20	67%	26	17	65%	24	20	83%
University of Miami	57	44	77%	69	41	59%	85	57	67%
<b>ICUF Totals</b>	<b>782</b>	<b>556</b>	<b>71%</b>	<b>781</b>	<b>531</b>	<b>68%</b>	<b>1,007</b>	<b>707</b>	<b>70%</b>

Note: Data include only full-time transfer students from Florida Community Colleges with which the institution has an articulation agreement.



## Graduate and First-Professional Degrees Awarded



## Percentage of Degrees Awarded to Florida Resident Students from Racial/Ethnic Minorities by Degree Level

- # The proportion of ICUF graduates from minority groups was considerably higher among Florida residents than for all graduates combined.
- # The proportion of degrees awarded to Florida residents from minorities at ICUF institutions was consistently higher than at SUS institutions.
- # The difference in proportion of awards to minorities by the two sectors was most marked for master's degrees: 39 percent to minorities in ICUF versus 24 percent in the SUS.
- # Although a higher proportion of degrees went to minorities in ICUF compared to the SUS, the number of degrees awarded to minorities in ICUF represented only 22 percent of the total degrees awarded by ICUF and the SUS combined.

Degree	Total Students	Total Minorities		White		Black		Hispanic		*Other Minority		Racial/Ethnic Unknown	
		No.	Percent	No.	Percent	No.	Percent	No.	Percent	No.	Percent	No.	Percent
<b>Bachelor's</b>	8,080	2,995	<b>37%</b>	4,781	59%	1,279	16%	1,506	19%	210	3%	304	4%
<b>Master's</b>	4,423	1,721	<b>39%</b>	2,555	58%	685	15%	939	21%	97	2%	147	3%
<b>Doctoral</b>	189	38	<b>20%</b>	145	77%	26	14%	9	5%	3	2%	6	3%
<b>First-Professional</b>	1,312	453	<b>35%</b>	830	63%	90	7%	258	20%	105	8%	29	2%
<b>Total Degrees</b>	14,004	5,207	<b>37%</b>	8,311	<b>59%</b>	2,080	<b>15%</b>	2,712	<b>19%</b>	415	<b>3%</b>	486	<b>3%</b>

\*Other minority includes American Indian/Alaska Native, and Asian/Pacific Islanders.

Total degrees above does not include 590 associate's and specialist degrees.

Degree Level	Percent Florida Resident Minorities		Black		Hispanic	
	ICUF	SUS	ICUF	SUS	ICUF	SUS
Bachelor's	37%	30%	16%	12%	19%	14%
Master's	39%	24%	15%	10%	21%	11%
Doctoral	20%	14%	14%	6%	5%	6%
First-Professional	35%	30%	7%	12%	20%	8%
<b>Total Degrees</b>	<b>37%</b>	<b>29%</b>	<b>15%</b>	<b>12%</b>	<b>19%</b>	<b>13%</b>

Racial/Ethnic Distribution of Total Degrees Awarded by ICUF Institutions  
During the Period July 1, 2000-June 30, 2001

P ICUF institutions awarded almost 23,000 degrees in 2000-2001, including 1,062 associate's, 12,696 bachelor's, 6,555 master's, 682 doctoral, and 1,661 first-professional degrees. In addition, three institutions awarded approximately 200 postmaster's certificates, primarily educational specialist degrees.

P 56 percent of all degrees awarded were undergraduate degrees. However, ICUF institutions also make an important contribution in awarding large numbers of graduate and first-professional degrees. For example, ICUF institutions awarded 33 percent more first-professional degrees than the entire SUS.

Institution	Total Awards	Total Minorities		White		Black		Hispanic		*Other Minority		Nonresident Alien		Race/Ethnicity Unknown	
		No.	Percent	No.	Percent	No.	Percent	No.	Percent	No.	Percent	No.	Percent	No.	Percent
<b>Associate's and Bachelor's Degrees</b>															
Florida Hospital College of Hlth Sciences	106	26	25%	68	64%	10	9%	13	12%	3	3%	6	6%	6	6%
Florida College	130	7	5%	121	93%	1	1%	6	5%	0	0%	2	2%	0	0%
<b>Bachelor's Degrees</b>															
Bethune-Cookman College	206	171	83%	1	<1%	169	82%	1	<1%	1	<1%	31	15%	3	1%
Clearwater Christian College	118	7	6%	111	94%	5	4%	1	1%	1	1%	0	0%	0	0%
Eckerd College	314	17	5%	253	81%	5	2%	11	4%	1	<1%	39	12%	5	2%
Edward Waters College	130	130	100%	0	0%	129	99%	0	0%	1	1%	0	0%	0	0%
Flagler College	361	17	5%	335	93%	4	1%	10	3%	3	1%	9	2%	0	0%
Florida Memorial College	200	183	92%	2	1%	171	86%	12	6%	0	0%	15	8%	0	0%
Ringling School of Art & Design	198	25	13%	164	83%	2	1%	12	6%	11	6%	8	4%	1	1%
Southeastern College	215	25	12%	189	88%	6	3%	13	6%	6	3%	1	<1%	0	0%
<b>Bachelor's &amp; Master's Degrees</b>															
Embry-Riddle Aeronautical University	902	98	11%	573	64%	31	3%	38	4%	29	3%	190	21%	41	5%
Florida Southern College	519	63	12%	419	81%	41	8%	19	4%	3	1%	24	5%	13	3%
International College	295	56	19%	239	81%	31	11%	17	6%	8	3%	0	0%	0	0%
Jacksonville University	449	97	22%	301	67%	62	14%	15	3%	20	4%	21	5%	30	7%
Rollins College	849	114	13%	649	76%	38	4%	54	6%	22	3%	47	6%	39	5%
Saint Leo University	2,463	842	34%	1383	56%	654	27%	131	5%	57	2%	11	<1%	227	9%
University of Tampa	663	106	16%	447	67%	38	6%	61	9%	7	1%	65	10%	45	7%
Werner Southern College	340	66	19%	269	79%	45	13%	19	6%	2	1%	2	1%	3	1%
Webber International University	125	15	12%	79	63%	10	8%	5	4%	0	0%	31	25%	0	0%
<b>Bachelor's, Master's, and Doctoral Degrees</b>															
Barry University	2,094	995	48%	835	40%	335	16%	627	30%	33	2%	123	6%	141	7%
Florida Institute of Technology	1,021	138	14%	617	60%	83	8%	26	3%	29	3%	226	22%	40	4%
Lynn University	460	72	16%	220	48%	29	6%	38	8%	5	1%	72	16%	96	21%
Nova Southeastern University	5,325	1,846	35%	3,040	57%	853	16%	791	15%	202	4%	331	6%	108	2%
Palm Beach Atlantic College	469	109	23%	330	70%	72	15%	31	7%	6	1%	22	5%	8	2%
Saint Thomas University	531	342	64%	112	21%	118	22%	217	41%	7	1%	56	11%	21	4%
Stetson University	812	97	12%	674	83%	32	4%	48	6%	17	2%	34	4%	7	1%
University of Miami	3,583	1,419	40%	1,663	46%	320	9%	935	26%	164	5%	460	13%	41	1%
<b>ICUF Totals</b>	<b>22,878</b>	<b>7,083</b>	<b>31%</b>	<b>13,094</b>	<b>57%</b>	<b>3,294</b>	<b>14%</b>	<b>3,151</b>	<b>14%</b>	<b>638</b>	<b>3%</b>	<b>1,826</b>	<b>8%</b>	<b>875</b>	<b>4%</b>

\*Other minority includes American Indian/Alaska Native, and Asian/Pacific Islanders.

Racial/Ethnic Distribution of Total Degrees Awarded by ICUF Institutions to Florida Residents  
During the Period July 1, 2000-June 30, 2001

# 67 percent of all degrees from ICUF institutions were awarded to Florida Residents.

# 62 percent of ICUF Florida resident degree recipients were women versus 56 percent in the SUS.

Institution	Total Awards	Total Minorities		White		Black		Hispanic		*Other Minority		Race/Ethnicity Unknown	
		No.	Percent	No.	Percent	No.	Percent	No.	Percent	No.	Percent	No.	Percent
<b>Associate's and Bachelor's Degrees</b>													
Florida Hospital College of Hlth Sciences	84	22	26%	56	67%	7	8%	12	14%	3	4%	6	7%
Florida College	40	6	15%	34	85%	1	3%	5	13%	0	0%	0	0%
<b>Bachelor's Degrees</b>													
Bethune-Cookman College	134	131	98%	1	1%	129	96%	1	1%	1	1%	2	1%
Clearwater Christian College	72	4	6%	68	94%	3	4%	1	1%	0	0%	0	0%
Eckerd College	137	12	9%	124	91%	4	3%	8	6%	0	0%	1	1%
Edward Waters College	84	84	100%	0	0%	84	100%	0	0%	0	0%	0	0%
Flagler College	214	12	6%	202	94%	3	1%	8	4%	1	<1%	0	0%
Florida Memorial College	143	141	99%	2	1%	130	91%	11	8%	0	0%	0	0%
Ringling School of Art & Design	104	17	16%	87	84%	2	2%	8	8%	7	7%	0	0%
Southeastern College	100	15	15%	85	85%	5	5%	9	9%	1	1%	0	0%
<b>Bachelor's &amp; Master's Degrees</b>													
Embry-Riddle Aeronautical University	290	36	12%	232	80%	7	2%	21	7%	8	3%	22	8%
Florida Southern College	416	54	13%	349	84%	36	9%	15	4%	3	1%	13	3%
International College	295	56	19%	239	81%	31	11%	17	6%	8	3%	0	0%
Jacksonville University	347	81	23%	240	69%	54	16%	11	3%	16	5%	26	7%
Rollins College	661	98	15%	527	80%	34	5%	47	7%	17	3%	36	5%
Saint Leo University	984	212	22%	683	69%	130	13%	64	7%	18	2%	89	9%
University of Tampa	423	74	17%	327	77%	24	6%	46	11%	4	1%	22	5%
Warner Southern College	204	38	19%	165	81%	28	14%	9	4%	1	<1%	1	<1%
Webber International University	74	13	18%	61	82%	8	11%	5	7%	0	0%	0	0%
<b>Bachelor's, Master's, and Doctoral Degrees</b>													
Barry University	1841	957	52%	754	41%	322	17%	605	33%	30	2%	130	7%
Florida Institute of Technology	340	57	17%	275	81%	13	4%	30	9%	14	4%	8	2%
Lynn University	248	60	24%	136	55%	29	12%	29	12%	2	1%	52	21%
Nova Southeastern University	3816	1,576	41%	2,166	57%	677	18%	759	20%	140	4%	74	2%
Palm Beach Atlantic College	364	93	26%	265	73%	63	17%	25	7%	5	1%	6	2%
Saint Thomas University	404	310	77%	83	21%	110	27%	195	48%	5	1%	11	3%
Stetson University	649	88	14%	555	86%	27	4%	45	7%	16	2%	6	1%
University of Miami	2126	1,169	55%	943	44%	230	11%	814	38%	125	6%	14	1%
<b>ICUF Totals</b>	<b>14,594</b>	<b>5,416</b>	<b>37%</b>	<b>8,659</b>	<b>59%</b>	<b>2,191</b>	<b>15%</b>	<b>2,800</b>	<b>19%</b>	<b>425</b>	<b>3%</b>	<b>519</b>	<b>4%</b>

\*Other minority includes American Indian/Alaska Native, and Asian/Pacific Islanders.

Racial/Ethnic Distribution of Master's Degrees Awarded by ICUF Institutions  
During the Period July 1, 2000-June 30, 2001

Institution	Total Master's	Total Minorities		White		Black		Hispanic		*Other Minority		Nonresident Alien		Race/Ethnicity Unknown	
		No.	Percent	No.	Percent	No.	Percent	No.	Percent	No.	Percent	No.	Percent	No.	Percent
<b>Bachelor's &amp; Master's Degrees</b>															
Embry-Riddle Aeronautical University	97	13	13%	31	32%	4	4%	7	7%	2	2%	48	49%	5	5%
Florida Southern College	12	0	0%	12	100%	0	0%	0	0%	0	0%	0	0%	0	0%
International College	5	0	0%	5	100%	0	0%	0	0%	0	0%	0	0%	0	0%
Jacksonville University	71	15	21%	40	56%	12	17%	3	4%	0	0%	6	8%	10	14%
Rollins College	268	26	10%	198	74%	7	3%	12	4%	7	3%	25	9%	19	7%
Saint Leo University	87	13	15%	66	76%	10	11%	3	3%	0	0%	0	0%	8	9%
University of Tampa	143	13	9%	104	73%	4	3%	8	6%	1	1%	22	15%	4	3%
Webber International University	16	0	0%	11	69%	0	0%	0	0%	0	0%	5	31%	0	0%
<b>Bachelor's, Master's, and Doctoral Degrees</b>															
Barry University	679	305	45%	293	43%	114	17%	177	26%	14	2%	36	5%	45	7%
Florida Institute of Technology	595	96	16%	382	64%	68	11%	9	2%	19	3%	86	14%	31	5%
Lynn University	85	6	7%	31	36%	1	1%	4	5%	1	1%	12	14%	36	42%
Nova Southeastern University	2,801	968	35%	1,572	56%	485	17%	431	15%	52	2%	206	7%	55	2%
Palm Beach Atlantic College	125	32	26%	87	70%	22	18%	8	6%	2	2%	4	3%	2	2%
Saint Thomas University	179	120	67%	42	23%	56	31%	62	35%	2	1%	9	5%	8	4%
Stetson University	119	7	6%	105	88%	2	2%	4	3%	1	1%	6	5%	1	1%
University of Miami	1,273	413	32%	572	45%	84	7%	287	23%	42	3%	258	20%	30	2%
<b>ICUF Totals</b>	<b>6,555</b>	<b>2,027</b>	<b>31%</b>	<b>3,551</b>	<b>54%</b>	<b>869</b>	<b>13%</b>	<b>1,015</b>	<b>15%</b>	<b>143</b>	<b>2%</b>	<b>723</b>	<b>11%</b>	<b>254</b>	<b>4%</b>

\*Other minority includes American Indian/Alaska Native, and Asian/Pacific Islanders.

Racial/Ethnic Distribution of Master's Degrees Awarded by ICUF Institutions to Florida Residents  
During the Period July 1, 2000-June 30, 2001

# 68 percent of all master's degrees from ICUF institutions were awarded to Florida Residents.

# 65 percent of ICUF Florida resident master's degree recipients were women versus 56 percent in the SUS.

Institution	Total Master's	Total Minorities		White		Black		Hispanic		*Other Minority		Race/Ethnicity Unknown	
		No.	Percent	No.	Percent	No.	Percent	No.	Percent	No.	Percent	No.	Percent
<b>Bachelor's &amp; Master's Degrees</b>													
Embry-Riddle Aeronautical University	25	3	12%	19	76%	1	4%	2	8%	0	0%	3	12%
Florida Southern College	10	0	0%	10	100%	0	0%	0	0%	0	0%	0	0%
Jacksonville University	60	15	25%	36	60%	12	20%	3	5%	0	0%	9	15%
International College	5	0	0%	5	100%	0	0%	0	0%	0	0%	0	0%
Rollins College	228	25	11%	185	81%	7	3%	12	5%	6	3%	18	8%
Saint Leo University	86	13	15%	65	76%	10	12%	3	3%	0	0%	8	9%
University of Tampa	107	11	10%	92	86%	4	4%	7	7%	0	0%	4	4%
Webber International University	7	0	0%	7	100%	0	0%	0	0%	0	0%	0	0%
<b>Bachelor's, Master's, and Doctoral Degrees</b>													
Barry University	594	289	49%	264	44%	110	19%	167	28%	12	2%	41	7%
Florida Institute of Technology	138	28	20%	108	78%	6	4%	15	11%	7	5%	2	1%
Lynn University	50	5	10%	29	58%	1	2%	3	6%	1	2%	16	32%
Nova Southeastern University	2,034	844	41%	1,157	57%	397	20%	408	20%	39	2%	33	2%
Palm Beach Atlantic College	114	31	27%	81	71%	21	18%	8	7%	2	2%	2	2%
Saint Thomas University	154	115	75%	35	23%	53	34%	60	39%	2	1%	4	3%
Stetson University	104	7	7%	96	92%	2	2%	4	4%	1	1%	1	1%
University of Miami	707	335	47%	366	52%	61	9%	247	35%	27	4%	6	1%
<b>ICUF Totals</b>	<b>4,423</b>	<b>1,721</b>	<b>39%</b>	<b>2,555</b>	<b>58%</b>	<b>685</b>	<b>15%</b>	<b>939</b>	<b>21%</b>	<b>97</b>	<b>2%</b>	<b>147</b>	<b>3%</b>

\*Other minority includes American Indian/Alaska Native, and Asian/Pacific Islanders.

Racial/Ethnic Distribution of Doctoral Degrees Awarded by ICUF Institutions  
During the Period July 1, 2000-June 30, 2001

Institution	Total Doctorates	Total Minorities		White		Black		Hispanic		*Other Minority		Nonresident Alien		Racial/Ethnic Unknown	
		No.	Percent	No.	Percent	No.	Percent	No.	Percent	No.	Percent	No.	Percent	No.	Percent
<b>Master's, and Doctoral Degrees</b>															
Barry University	10	0	0%	10	100%	0	0%	0	0%	0	0%	0	0%	0	0%
Florida Institute of Technology	35	5	14%	20	57%	4	11%	0	0%	1	3%	10	29%	0	0%
Lynn University	9	0	0%	8	89%	0	0%	0	0%	0	0%	0	0%	1	11%
Nova Southeastern University	519	86	17%	399	77%	65	13%	11	2%	10	2%	30	6%	4	1%
University of Miami	109	28	26%	54	50%	15	14%	10	9%	3	3%	26	24%	1	1%
<b>ICUF Totals</b>	<b>682</b>	<b>119</b>	<b>17%</b>	<b>491</b>	<b>72%</b>	<b>84</b>	<b>12%</b>	<b>21</b>	<b>3%</b>	<b>14</b>	<b>2%</b>	<b>66</b>	<b>10%</b>	<b>6</b>	<b>&lt;1%</b>

\*Other minority includes American Indian/Alaska Native, and Asian/Pacific Islanders.

Racial/Ethnic Distribution of Doctoral Degrees Awarded by ICUF Institutions to Florida Residents  
During the Period July 1, 2000-June 30, 2001

# 28 percent of all doctoral degrees from ICUF institutions were awarded to Florida Residents.

# 63 percent of ICUF Florida resident doctoral degree recipients were women versus 42 percent in the SUS.

Institution	Total Doctorates	Total Minorities		White		Black		Hispanic		*Other Minority		Racial/Ethnic Unknown	
		No.	Percent	No.	Percent	No.	Percent	No.	Percent	No.	Percent	No.	Percent
<b>Master's, and Doctoral Degrees</b>													
Barry University	9	0	0%	9	100%	0	0%	0	0%	0	0%	0	0%
Florida Institute of Technology	6	1	17%	5	83%	0	0%	0	0%	1	17%	0	0%
Lynn University	10	0	0%	8	80%	0	0%	0	0%	0	0%	2	20%
Nova Southeastern University	125	22	18%	100	80%	18	14%	4	3%	0	0%	3	2%
University of Miami	39	15	38%	23	59%	8	21%	5	13%	2	5%	1	3%
<b>ICUF Totals</b>	<b>189</b>	<b>38</b>	<b>20%</b>	<b>145</b>	<b>77%</b>	<b>26</b>	<b>14%</b>	<b>9</b>	<b>5%</b>	<b>3</b>	<b>2%</b>	<b>6</b>	<b>3%</b>

\*Other minority includes American Indian/Alaska Native, and Asian/Pacific Islanders.

Racial/Ethnic Distribution of First-Professional Degrees Awarded by ICUF Institutions  
During the Period July 1, 2000-June 30, 2001

Institution	Total	Total Minorities		White		Black		Hispanic		*Other Minority		Nonresident Alien		Racial/Ethnic Unknown	
		No.	Percent	No.	Percent	No.	Percent	No.	Percent	No.	Percent	No.	Percent	No.	Percent
<b>First-Professional Degrees</b>															
Barry University	109	23	21%	70	64%	6	6%	12	11%	5	5%	5	5%	11	10%
Nova Southeastern University	730	236	32%	466	64%	34	5%	107	15%	95	13%	14	2%	14	2%
Saint Thomas University	114	58	51%	44	39%	13	11%	42	37%	3	3%	1	1%	11	10%
Stetson University	257	50	19%	203	79%	15	6%	27	11%	8	3%	0	0%	4	2%
University of Miami	451	171	38%	273	61%	29	6%	106	24%	36	8%	5	1%	2	<1%
<b>ICUF Totals</b>	<b>1,661</b>	<b>538</b>	<b>32%</b>	<b>1,056</b>	<b>64%</b>	<b>97</b>	<b>6%</b>	<b>294</b>	<b>18%</b>	<b>147</b>	<b>9%</b>	<b>25</b>	<b>2%</b>	<b>42</b>	<b>3%</b>

\*Other minority includes American Indian/Alaska Native, and Asian/Pacific Islanders.

Racial/Ethnic Distribution of First-Professional Degrees Awarded by ICUF Institutions to Florida Residents  
During the Period July 1, 2000-June 30, 2001

- # 80 percent of all first-professional degrees from ICUF institutions were awarded to Florida Residents.
- # 50 percent of both ICUF and SUS first-professional degree recipients were women.

Institution	Total	Total Minorities		White		Black		Hispanic		*Other Minority		Racial/Ethnic Unknown	
		No.	Percent	No.	Percent	No.	Percent	No.	Percent	No.	Percent	No.	Percent
<b>First-Professional Degrees</b>													
Barry University	88	20	23%	60	68%	5	6%	10	11%	5	6%	8	9%
Nova Southeastern University	543	184	34%	350	64%	29	5%	97	18%	58	11%	9	2%
Saint Thomas University	73	41	56%	25	34%	11	15%	29	40%	1	1%	7	10%
Stetson University	232	46	20%	182	78%	13	6%	25	11%	8	3%	4	2%
University of Miami	376	162	43%	213	57%	32	9%	97	26%	33	9%	1	<1%
<b>ICUF Totals</b>	<b>1,312</b>	<b>453</b>	<b>35%</b>	<b>830</b>	<b>63%</b>	<b>90</b>	<b>7%</b>	<b>258</b>	<b>20%</b>	<b>105</b>	<b>8%</b>	<b>29</b>	<b>2%</b>

\*Other minority includes American Indian/Alaska Native, and Asian/Pacific Islanders.